



for a living planet®

Ecological Report on Magombera Forest



Andrew R. Marshall

**(COMMISSIONED BY WORLD WIDE FUND FOR NATURE TANZANIA
PROGRAMME OFFICE)**

Feb 2008



Contents

Abbreviations and Acronyms	3
Acknowledgements	4
Executive Summary	5
Background	5
Aim and Objectives	5
Findings	6
Recommendations	7
Introduction	9
Tropical Forests	9
Magombera Location and Habitat	9
Previous Ecological Surveys	10
Management and Conservation History	11
Importance of Monitoring	14
Aim and Objectives	15
Methods	15
Threats	17
Forest Structure	17
Key Species	18
Forest Restoration	20
Results and Discussion	21
Threats	21
Forest Structure	25
Key Species	26
Forest Restoration	36
Recommendations	37
Immediate Priorities	38
Short-Term Priorities	40
Long-Term Priorities	41
References	44
Appendices	49
Appendix 1. Ministry letter of support for the increased conservation of Magombera forest	49
Appendix 2. Datasheets	50
Appendix 3. List of large trees in Magombera Forest plots	55
Appendix 4. Slides used to present ecological findings to villages	58
Appendix 5. Photographs from village workshops	64

Abbreviations and Acronyms

CEPF	Critical Ecosystem Partnership Fund
CITES	Convention on the International Trade in Endangered Species
IUCN	International Union for the Conservation of Nature and Natural Resources
TAZARA	Tanzania-Zambia Railroad
UFP	Udzungwa Forest Project
UMNP	Udzungwa Mountains National Park
WWF-TPO	Worldwide Fund for Nature – Tanzania Programme Office

Acknowledgements

Thanks to all of the following individuals and institutions:

- CEPF for 2007 funds for fieldwork and report writing;
- National Geographic Society, Margot Marsh Biodiversity Foundation and the Natural Environment Research Council (NER/S/A/2002/11177) for 2003-5 fieldwork funding;
- Zakiya Aloyce and Stephen Mariki for project leadership, guidance and support;
- Tom Struhsaker, Jon Lovett and Piran White for guidance and supervision during 2003-5 fieldwork;
- Tom Struhsaker and John Watkin for assistance in 2007 project development and constructive comments on progress and project outputs;
- John Msirikale and Samuel Mtoka for local co-ordination of fieldwork and data entry;
- All field and data entry assistants (especially Hamidu Mlendendo and Exaud Kivambe);
- Paul Harrison for discussions, comments and socio-economic input;
- Roy Gereau for information on tree distributions/IUCN status, comments and access to unpublished data;
- All attendees of the various workshops and presentations that led to this project;
- WWF administrative and logistical staff;
- Tanzania Wildlife Research Institute for permission to conduct Ph.D. research;
- All officials from the Selous Game Reserve, Forestry and Beekeeping Division, Kilombero District Commissioner's office, District Executive Director's office, District Land office and Tanzania National Parks Authority, for discussion and advice on planning the future of Magombera;
- Residents of Katurukila, Magombera, Kanyenja and Msolwa Stesheni villages for embracing the project with useful suggestions and support for the project recommendations;
- Flamingo Land Ltd. for agreeing funds and support for continuing this vital work beyond termination of the project.

Report Commissioned by WWF Tanzania Programme Office and financed by Critical Ecosystem Partnership Fund (CEPF)
Report by Andrew R. Marshall (University of York & Flamingo Land Ltd., UK)

All photographs © Andrew R. Marshall (not to be used without permission)

Cover photographs: SUA graduate Deo Shirima measuring tree in Ngulumilo area of Magombera forest; Angolan black and white colobus, *Colobus angolensis palliatus* in Mtalawanda area of Magombera forest; Panoramic view of Magombera forest in front of the Udzungwa Mountains, with sugar plantations in the foreground.

Executive Summary

Background

Magombera forest is a threatened area of tropical lowland forest, long recognised for its high biodiversity value. Among Tanzania's forests it has had a relatively high profile, due to excitement generated by early surveys and its subsequent chequered management history. The first in-depth survey of the unique flora and fauna led all management authorities to agree that the area would be annexed into the adjacent Selous Game Reserve. However, after degazettement of Forest Reserve status in 1981 it was never formally annexed, leaving it with no protected status.

The vulnerable status of Magombera forest was re-emphasised at a 2004 workshop discussing priorities for the Udzungwa Mountains and surrounding area. This followed threats of destruction for re-housing illegal squatters from adjacent agricultural land and considerable concern from the local and international conservation community, including the Honourable Minister for Natural Resources and Tourism and Head of Conservation International. From this workshop, plans were then developed to begin a new conservation project under the WWF Tanzania Programme Office.

In this report, the ecological findings of the new project are presented, along with data collected in 2003-5. Results are further supplemented with additional information from the literature.

Aim & Objectives

With increasing research in the past ten years, we now have far more reliable information on the ecology of Magombera forest in relation to other forests in Tanzania. The aim of this report is to provide impetus for the improved management and ecological monitoring of Magombera forest. There are seven main objectives:

- 1) To introduce methods and results of two ecological surveys;
- 2) To determine the ecological importance of Magombera forest;
- 3) To prioritise threats;
- 4) To assess forest health;
- 5) To assess the status of selected rare and indicator species;
- 6) To test methods for forest restoration;
- 7) To make recommendations for future management, village livelihoods and monitoring.

Findings

i. Importance of Magombera Forest

The original proposal to annex Magombera forest into the Selous Game Reserve was largely justified by the high density of the rare Udzungwa red colobus monkey. However from more recent surveys and the literature, the conservation value of the area is clearly not restricted to a single species:

Flora (trees above 10 cm diameter):

- 17 IUCN Red-List or potential Red-List species;
- 10 species limited to the forests of East Africa (Eastern Arc / Coastal Forests and no more than one other location);
- An astounding 41.2 % of stems ≥ 20 cm diameter are within these two categories;
- The proportion and abundance of rare species are more than double than in similar elevation forest in the Udzungwa Mountains National Park;
- The habitat is distinct from the adjacent Selous Game Reserve.

Fauna:

- The highest encounter rate of Udzungwa red colobus anywhere (this species is IUCN Red-Listed and “Presidential Game” in Tanzania);
- An important dry season refuge for elephants of the Selous Game Reserve;
- Home to the Kilombero valley endemic frog *Hyperolius reesei*;
- One of two known localities of the chameleon *Kinyongia* sp. nov. (soon to be named after Magombera forest);
- Montane birds at unusually low elevation.

ii. Threats to Magombera Forest

From our surveys we suggest that the threats to Magombera forest should be prioritised as follows:

- 1) **Pole cutting** (understorey trees predicted to disappear within 4 years)
- 2) **Fire** (annual fires are preventing regeneration and encouraging growth of restricting climbers)
- 3) **Firewood collection** (removal of forest floor woody detritus is likely to affect regeneration)
- 4) **Timber felling** (currently low, however recent threats suggest monitoring is needed)
- 5) **Hunting** (currently low, perhaps because most medium-sized ground mammals already removed)

iii. Status of Magombera forest

All marketable timber species were removed during construction of the TAZARA railroad, however the remaining canopy is intact in most places. The forest structure is typical of a forest that has undergone understorey disturbance, with few young stems, high mean stem size, and a dense tangle of climbers. Pole-cutting has also affected the rare species composition in the understorey/midstrata.

The mammal community has been notably impacted by hunting. Subsequently there are very few medium-sized terrestrial mammals. Although primate densities are high, there is some evidence for a recent decline. This may be due to increasing forest degradation, however further monitoring is required. The Udzungwa red colobus are the most vulnerable monkey to structural damage, as seen from a significant relationship with tree volume.

Recommendations

Magombera is a forest famous both locally and internationally and therefore provides an excellent opportunity for Tanzania to demonstrate its ability to manage an area of high conservation value. There are many recommendations for improving village livelihoods, protection of the forest and monitoring:

i. Immediate Priorities

- Raise awareness, present project recommendations and make agreements with local villages (completed February 2008)
- Seek approval of project recommendations from Kilombero district officials
- WWF-TPO and Udzungwa Forest Project (UFP) representatives meet with Forestry and Beekeeping Division, Selous Game Reserve and Illovo Sugar to agree on a process for annexation
- Improve patrols through better coverage and timing, and establishment of an emergency response system
- Measure boundaries
- Continue monitoring through UFP, with clear goals

ii. Short-Term Priorities

- **Anexation into the Selous Game Reserve (the four villages adjacent to Magombera forest have given their official support to this plan)**

- Develop management plan including biological and livelihood components
- Implement land-use plan in villages, especially private woodlots for sustainable supply of firewood, poles and tool handles and plans for curbing immigration
- Prioritise activities to improve livelihoods, including alternative fuel sources, income generation (e.g. ecotourism or tree-planting), education and human-wildlife conflict
- Begin active restoration of the forest through clearance of restricting climbers (depending on the results of monitoring)
- Monitor the cessation of pole-cutting, reduction in firewood collection and regeneration of young trees

iii. Long-Term Priorities

- Curb intrinsic population increase
- Establish ranger post near to Magombera forest
- Monitor the re-establishment of timber species, stabilisation of Udzungwa red colobus density, recovery of duikers from hunting and cessation of firewood collection

Introduction

Tropical Forests

Habitat degradation and loss are the greatest threats to terrestrial species (Baillie et al. 2004). Estimates of annual loss of tropical forest range from 8.7 to 12.5 M ha (Chapman & Peres 2001; Mayaux et al. 2005). An area between half and equal size to this is degraded by selective logging each year (Achard et al. 2002; Asner et al. 2005). Loss and degradation of tropical forests are a global concern as more than half of the world's species are found in tropical forests, despite covering only 7 % of the world's surface (WRI 1992). Subsequently, the number of species threatened with extinction in tropical forests is predicted to increase (Whitmore & Sayer 1992). Tropical forest loss and degradation also have implications for climate change, hydrology, nutrient cycling, and natural resource availability (Whitmore 1998). Restoring degraded forests may therefore be one of greatest challenges for ecologists this century (Duncan & Chapman 2003). In Tanzania, most forests have been heavily degraded by human activity and there has been no active management to restore forest health. For example an estimated 63 % the Udzungwa mountains of southern Tanzania has been heavily degraded (Marshall 2007; Marshall et al. in preparation). This statistic particularly striking given that this mountain range is of the least degraded in Tanzania.

Magombera Location and Habitat

Magombera forest lies around 270 m above sea level, near to the villages of Katurukila, Magombera, Kanyenja and Msolwa Stesheni in Kilombero district (Morogoro region; Figures 1 and 4). This special forest is sandwiched between two of Tanzania's most impressive protected areas; the Udzungwa Mountains National Park to the west is one of the world's most important areas for the conservation of biodiversity and the Selous Game Reserve to the east is Africa's largest protected area. Lowland tropical forest such as that found in Magombera, is among the world's most threatened habitats (Collins 1990; Vieira & Scariot 2006). The habitat of Magombera has affinities to the lowland and montane forests of the nearby Udzungwa Mountains and the coastal forests of Tanzania and Kenya. This may in part be due to the mixed soil which includes both alluvial deposits from the Udzungwa Mountains and Karoo sandstone from the Msolwa floodplain (Rodgers et al. 1979). The habitat is unique from other areas of coastal and riverine forest found in the adjacent Selous Game Reserve (Vollesen 1980). Annual rainfall is estimated at 1514 mm and parts of the forest are seasonally flooded (Rodgers et al. 1979).

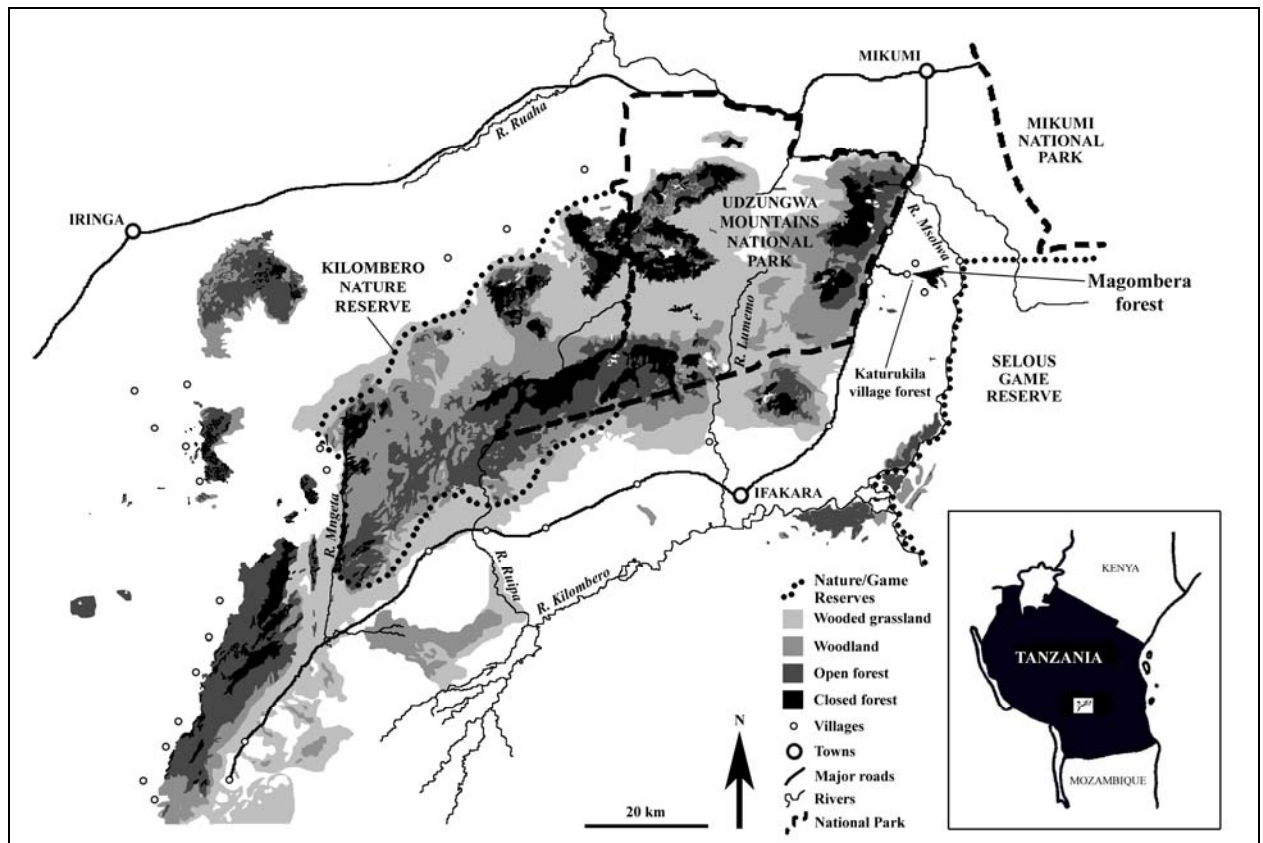


Figure 1. Habitat map of the Udzungwa Mountains showing location of Magombera forest and Katurukila village forest.

Previous Ecological Surveys

The first comprehensive ecological summary of Magombera forest was made by Rodgers et al. (1979). This report was based on a ten day survey of plants, mammals, forest extent and village interviews. The report also used aerial photographs from 1955 to 1979, personal communication with taxonomic experts and a literature review of previous research. The ten day ecological survey included two 25m × 25m plots for trees, a count of tree species along the TAZARA railroad (Figure 4), and qualitative classification of vegetation type, canopy height and damage in 50 m sections along the railway. Counts of monkeys were also made during the ten day ecological survey, including (i) four simultaneous north-south walks totalling 39 km, (ii) repeated walks along the railway totalling 47.5 km, and (iii) opportunistic walks to find additional primate groups, count group size and to make incidental ecological/behavioural observations. In the same year, Kamara (1979) also made an 8 day survey of human forest use and colobus monkeys. This study found several groups of monkeys and highlighted the threat of fire, agriculture and tree-felling.

The conservation value of Magombera forest was first highlighted through the presence of the endangered Udzungwa red colobus monkey (*Procolobus gordonorum*; Rees 1964; IUCN 1977 in Rodgers et al. 1979). Ecological and behavioural observations made in 1977 then led to recommendations for a revised taxonomy of the species (Struhsaker & Leland 1980). In fact Magombera was then considered the largest and only viable population of this species (Rodgers et al. 1979; Rodgers & Homewood 1981). Later surveys in the Udzungwa Mountains revealed that the overall range and population of this rare species is greater than first thought (Rodgers & Homewood 1982; Decker 1994 and 1996; Dinesen et al. 2001; Struhsaker et al. 2004; Marshall 2007; Marshall et al. submitted; Marshall et al. in preparation). However Magombera forest continues to be an important stronghold for this rare monkey, which is restricted to the area around the Udzungwa Mountains. The species remains Vulnerable the IUCN Red List (Baillie et al. 2004), CITES Appendix 2 and Class A in the Africa Convention. It is also “Presidential Game” in Tanzania, meaning that it is illegal to hunt.

Magombera forest is also of enormous value for rare trees, biodiversity and water catchment, as we outline in this report. Three collecting trips in the 1970s led to a check-list of vascular plants for Magombera forest and the Selous Game Reserve, including several new species (Vollesen 1980). From this, Magombera forest was thought to contain close to 500 plant species including three potentially endemic trees. Decker (1994) also highlights the presence of montane birds at unusually low elevation and Rodgers et al. (1979) list a potentially endemic frog *Hyperolius* sp. nov. (from respective personal communications with Schiotz and Stuart). Other than the short vegetation survey already mentioned (Rodgers et al. 1979), prior to this report there had been no systematic survey in Magombera forest of any taxa besides monkeys. Furthermore, previous studies were mainly biased towards the easily accessible area near the TAZARA railroad.

Management and Conservation History

The following timeline summarises the management and conservation history of Magombera forest. Key stages of conservation history are highlighted in bold:

- 1955: Magombera Forest Reserve (1,578 ha) gazetted for its valuable timber stock including mvule *Milicia excelsa* and mkangazi *Khaya anthotheca* (formerly *K. nyassica*; Rodgers et al. 1979)
- 1955: Forest cover estimated at 15.05 km² from aerial photographs (Rodgers et al. 1979)
- 1964: First documentation of the Udzungwa red colobus *Procolobus gordonorum* in the area (Rees 1964)
- 1965: No cultivation along forest boundary and minimal exploitation of the forest (Rodgers et al. 1979)

- 1960s (late) to 1972: TAZARA railroad built through middle, including clearance of over 50 ha of forest and extraction of all marketable timber (Rodgers et al. 1979)
- 1976: Two Ujamaa villages established along the railway immediately to the north-east (Katurukila) and north-west (Msolwa Stesheni; Rodgers et al. 1979)
- 1977: The habitat of Magombera forest reportedly extended south beyond Ifakara (Vollesen 1980)
- 1977: First ecological and behavioural study of the Udzungwa red colobus (Struhsaker & Leland 1980)
- 1979: Ten day ecological survey and report summarised the importance of the forest and showed that the forest habitat was continuous with the Udzungwa Mountains (University of Dar es Salaam; Rodgers et al. 1979; Figure 2a). Forest area at Magombera approximately 10-11 km².

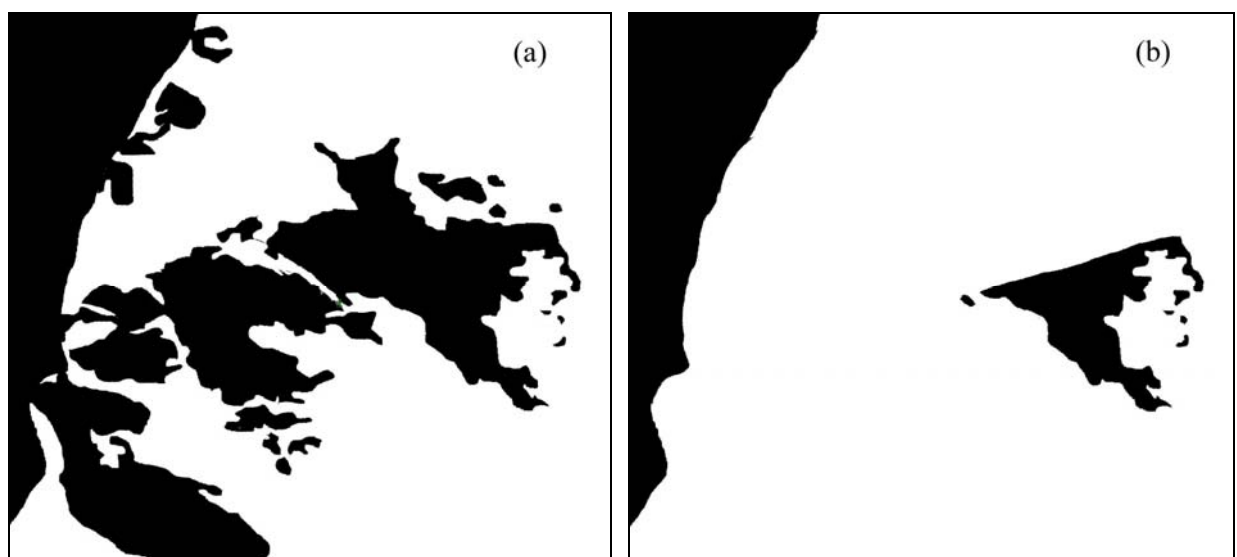


Figure 2. Forest cover (black) and open habitat (white) in the Magombera area in (a) 1979 (Rodgers et al. 1979) and (b) 2004 (Marshall 2005). The large area of forest on the left of both figures is the beginning of the Udzungwa Mountains. Open habitats are mostly sugar plantation and settlements.

- 1979: Forest Reserve status deemed inadequate for long-term conservation as every metre of the Forest Reserve boundary cultivated and encroachment widespread (Rodgers et al 1979)
- 1979: Fourth East Africa Wildlife Symposium recommended immediate upgrading of conservation status (Rodgers & Homewood 1979). This was the first of many proposals between 1979 and 2005 to annex Magombera forest to the Selous Game Reserve.
- 1980: All management authorities agreed that the southern area of Magombera forest should be annexed into the Selous Game Reserve (Baldus 1992; Hoffman 1995).**
- 1980: Local villagers began clear-felling a 5 km² area of Magombera forest north of the TAZARA railroad, eventually forming the village of Magombera.

1981: Forest Reserve status revoked 22-27th February 1981 (Holmes 1995) to enable annexation into the Selous Game Reserve.

1992: Realisation that annexation to the Selous Game Reserve was never formalised and that the Kilombero Sugar Company had purchased some of the area for wood cutting and small holder production (Baldus 1992; Decker 1994).

1993: Agreement between Selous Conservation Programme and Kilombero Sugar Company that conservationists and the sugar estate will work amicably together to better conserve the area.

1995: The people in villages adjacent to Magombera forest believed the forest to be under the protection of the Selous Game Reserve and were not encroaching (Hoffman 1995).

2002: Illovo Sugar (formerly Kilombero Sugar Company, until 1998) re-initiated plans to develop the area proposed for annexation as a site for re-housing unwanted squatters from the nearby sugar estate (Jones and Rovero personal communication).

2002: Following a well-supported letter-writing campaign (including Head of Conservation International, Russell Mittermeier), Illovo Sugar agreed to find an agreeable solution, the Permanent Secretary supported the campaign for annexation (Appendix 1) and the Honourable Minister for Natural Resources and Tourism agreed that “... Magombera forest will remain as a Nature Reserve...”.

2003-5: Extensive survey of monkeys and large trees in Magombera reveals that the forest is still threatened, particularly by pole-cutting and fire (Marshall 2005 & 2007; this report).

2004: Priorities for conservation of Magombera forest announced to workshop on the Udzungwa Mountains (Marshall 2005).

2006: Illovo Sugar purchased by Associated British Foods.

2006: Proposal by WWF-TPO and Andy Marshall for funds to initiate baseline monitoring and facilitate annexation to the Selous Game Reserve accepted by CEPF.

Current: From Landsat imagery, the remaining forest area is 10.34 km² and completely isolated from the nearest forest fragment in the Udzungwa Mountains (Figures 2b and 3; Landsat ETM+; Global Land Cover Facility/U.S. Geological Survey; Oct 25th and Nov 1st 1999; Paths 167-8; Rows 65-6). This forest size south of the rail has likely been relatively stable since clearance of the northern area began in 1980. However the status of the remaining forest was unknown until the current survey.

Current: Land survey by WWF-TPO found that the Illovo Sugar own 61.5 % of the land proposed for annexation (Figure 3). They have agreed to lease the land for conservation management, however compensation for the loss of land is required (Dave Coates pers. comm.).

Current: Villagers living near to Magombera forest are generally supportive of the annexation of Magombera forest to the Selous Game Reserve, so long as their natural resource needs are considered (personal communication with villagers and Paul Harrison).

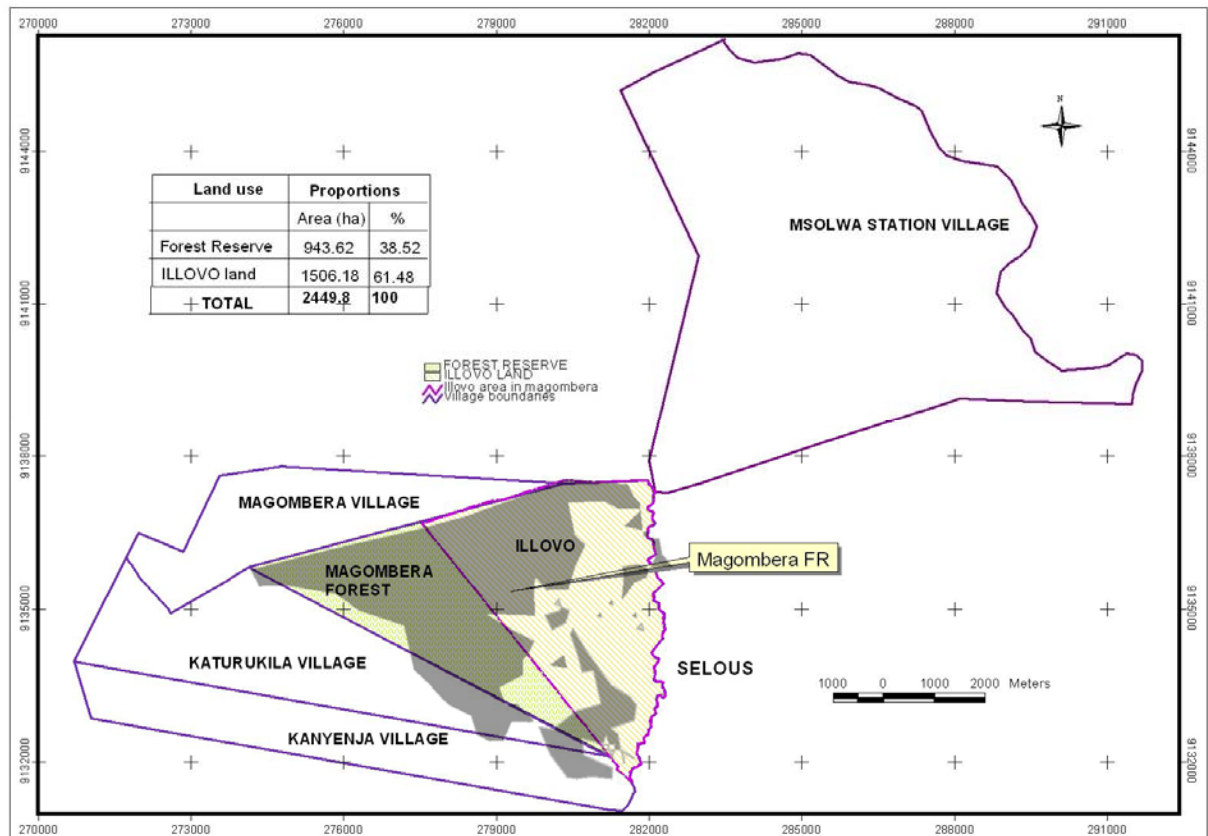


Figure 3. Land ownership and approximate forest cover (grey shading) in and around the former Magombera Forest Reserve (yellow hatched area). Land owners include four villages, Tanzanian government (former Forest Reserve land) and Illovo Sugar. Boundaries compiled by WWF-Tanzania Programme Office. Forest area determined from Landsat imagery (Landsat ETM+; Global Land Cover Facility/U.S. Geological Survey; Oct 25th and Nov 1st 1999; Paths 167-8; Rows 65-6).

Importance of Monitoring

Monitoring of the state of forest health over time allows managers to determine how successful their forests are being conserved, and therefore to guide future planning and develop local education. Monitoring is vital to ensure successful conservation of habitats (Sutherland 2000). However, only a very low proportion of protected areas in Africa have long-term monitoring programmes (Struhsaker et al 2005). Fully quantifying the effects of management practices on a forest ecosystem would require painstaking work, due to the massive number of species involved. However basic criteria for assessing ecosystem health and habitat composition/structure are rarely determined (Balmford et al. 2003). Selection of key species as “indicators”, “guilds”, or “functional types”, can assist in making more rapid assessments (Skorupa 1986 & 1988; Landres et al. 1988; Gondard et al. 2003). Monitoring rare species is also of importance to determine habitat requirements for management.

Aim and Objectives

With increasing research in the past ten years, we now have far more reliable information on the ecology of Magombera forest in relation to other forests in Tanzania. The aim of this report is to provide impetus for the improved management and ecological monitoring of Magombera forest. There are seven main objectives that we address using both new and published data:

- 1) To introduce methods and results of two ecological surveys;
- 2) To determine the ecological importance of Magombera forest;
- 3) To prioritise threats;
- 4) To assess forest health;
- 5) To assess the status of selected rare and indicator species;
- 6) To test methods for forest restoration;
- 7) To make recommendations for future management, village livelihoods and monitoring.

Methods

The methods have been designed to allow a broad overview of the ecological importance of Magombera forest. A complete inventory of all flora and fauna would have been impractical and unnecessary at this stage. Instead the survey covered the four major issues of (i) threats, (ii) structure, (iii) key species, and (iv) restoration. Assessing the level and types of human threat to the forest is of obvious importance for determining management activities, both in the forest and surrounding villages. Not least because unauthorised activities that damage forests are illegal under Tanzanian law, regardless of protected status. Assessment of forest structure is important for determining forest health. Key animal and plant species were selected for special attention for various reasons. In particular, trees were selected as they are the physical structure of the forest, including the bulk of the biomass, and the major target for illegal activities. Monkeys were chosen as they can be indicators of disturbance and key dispersers of seeds. They are also of special interest in Magombera forest due to their high density, particularly the rare Udzungwa red colobus. They are also relatively easy to observe and important flagship species for conservation. Duikers were chosen as an indicator of hunting pressure. Finally given the huge need for restoring forests throughout the tropics, the methods also include experimental plots to determine the effect of removing restricting climbers for encouraging tree growth.

Surveys were carried out primarily along two 4 km transects (Mtalawanda and Ngulumilo; Figure 4), during two sampling periods. Transects consisted of narrow paths marked with numbered tags at 50 m

intervals. The 4 km length was chosen for consistency with ongoing research in the adjacent Udzungwa Mountains. Transect routes were decided from government topographic maps to best fit inside the forest habitat and were spaced 570 m apart to reduce the chance of monkey groups passing between the two areas. Care was taken to negotiate paths around trees rather than cutting them. To further minimise impact on the forest, elephant / human paths were followed whenever these coincided approximately with the pre-determined routes. Andy Marshall established the two transects, surveyed large trees, monkey density, colobus monkey group size and duiker abundance between 2003 and 2005. In 2007, Marshall again co-ordinated surveys of trees, monkeys and duikers, as well as threats and forest restoration. The 2007 data were collected primarily by villagers Hamidu Mlendo and Exaud Kivambe (March 2007 to December 2007) and local co-ordinators John Msirikale (March to June 2007) and Samuel Mtoka (November to December 2007). All data collectors were trained by Andy Marshall. Published sources are also used to supplement the data collected.

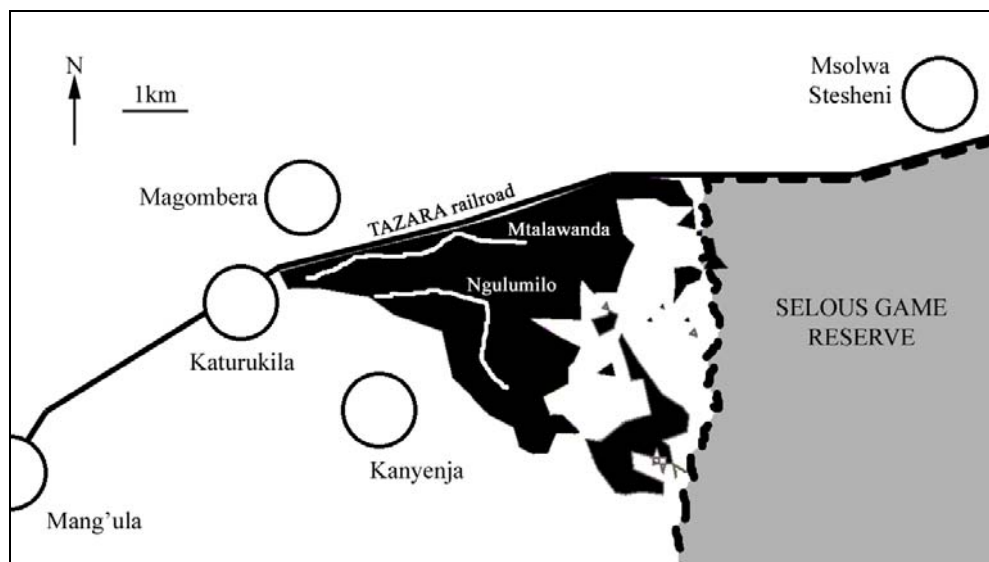


Figure 4. Position of monitoring transects (white lines) in Magombera forest (black blocks), including adjacent villages (circles) and TAZARA railroad (black line). UTM co-ordinates for westernmost end of transects: Mtalawanda 274633 E 9135392 S, Ngulumilo 275885 E, 9134990 S.

Wherever possible, data are presented as mean plus or minus (\pm) a 95 % confidence limit. This is a standard measure of mathematical error calculated as $(1.96 \times \text{standard deviation}) / \sqrt{(\text{number of samples})}$. On bar charts this appears a T-shape on the top of each bar. Where the 95 % confidence limits of two samples do not overlap, the difference between the two samples can be considered statistically significant.

Threats

Human threats to Magombera forest were surveyed using two methods. The principle method was using 100 m by 20 m plots, within which all signs of human impact were enumerated on standardised datasheets (Appendix 2i). Forty such plots were placed, spaced 100 m apart along the two transects (20 on each transect beginning at the 0 m tag) between March and May 2007. An additional 40 plots were also placed 100 m away from alternate 100 m tags on each transect (beginning at the 100 m tag) between August and September 2007. These were to determine whether the illegal activities are occurring away-from or close-to transects. To help relocation of these plots, they were all placed on a simple bearing from each marker (Mtalawanda: south; Ngulumilo 0-1900: north; Ngulumilo 2100-3900: east). In each plot, the following information was recorded:

- Number of pole-sized trees (“poles”; stems above 5 cm but below 15 cm diameter at breast height [dbh; 1.30 m]), divided into three categories:
 - o Live
 - o Cut <1 yr (cut less than 1 year before survey)
 - o Cut >1 yr (cut more than 1 year before survey)
- Number of timber-sized trees (“timber”; stems 15 cm dbh or greater), divided into the same three categories as poles
- Number of sawing tressles or pits
- Sounds of cutting
- Number of signs of firewood collection
- Number of snares
- Presence/absence of signs of bushfire
- Presence/absence of human tracks
- Presence/absence of paths (these are shared and maintained by both elephants and humans)

In addition to these plots, casual walks were also made throughout the area towards the end of 2007, primarily along paths not related to our transects. These were carried out as it was clear that people in the area often use these paths when accessing the forest. Thus there was an increased chance that damaging activities would be detected. GPS co-ordinates were taken during all of these casual walks.

Forest Structure

Forest structure was assessed along the entire length of the two transects between February 2004 and April 2005. To ease data collection, datasheets were used as in Appendix 2ii. Within 2.5 m either side

of the transects, all trees 10 cm dbh or greater were measured for dbh (cm; using a girth tape), height (m; using a laser range-finder), distance from the centre of the transect (m; using a tape measure) and distance along the transect (m; estimated by pacing). Stems were then re-measured in 2007, noting whether they were still alive, or whether they had died or had been cut or damaged since the first survey. Different datasheets were used for re-measurement, as shown in Appendix 2iii.

Key Species

i. Trees

Survey of trees was based on the same stems as the forest structure plots. To allow for better analysis of larger trees, stems of dbh 20 cm or more were also identified and measured within 5 m either side of each transect. All trees were identified in the field where possible during fieldwork in 2004/5. Where this was not possible, specimens were collected and dried for later identification at the Royal Botanic Gardens, Kew, with the assistance of Kaj Vollesen.

To investigate the conservation importance of Magombera forest, we were particularly interested in those species that are rare globally, or of restricted range. “Rare species” were therefore classed as those included or proposed for inclusion on the IUCN Red-List, or known only from the Eastern Arc and Coastal Forests of Tanzania, Kenya and Mozambique (Gereau & Luke 2003; Baillie et al. 2004; Lovett et al. 2006; Roy Gereau personal communication).

ii. Monkeys

Three monkey species are permanent residents of Magombera forest (Udzungwa red colobus, Angolan black and white colobus *Colobus angolensis palliatus* and Sykes monkey *Cercopithecus mitis*), with vervet monkeys (*Cercopithecus aethiops*) also occasionally found at forest edge. Monkeys were surveyed along both transects between February 2004 and March 2005, and again between March and September 2007. Beginning between 0700 h and 0730 h, an observer walked at 1 km per hour, recording all signs of monkeys. When monkey groups were encountered, the observer spent a maximum of 10 min noting several details on a standardised form (Appendix 2iv). Firstly the observer recorded the time, distance along the transect and the horizontal distance and compass bearing to the first individual seen of each species per group (using a laser range-finder to measure distances). Where the horizontal distance could not be measured directly, the direct distance from the observer to the animal was recorded, along with the slope upwards using a clinometer. Basic trigonometry was then used to calculate horizontal distance. Where possible, the perpendicular distance to the first individual

was measured. Where this was not possible, it was calculated using the horizontal distance, bearing and transect GPS location.

Other data recorded for each observation included the species of monkey present in each group, or in adjacent trees to each group. The mode of detection of each species was also noted, and also whether the species was physically seen, or just heard moving or vocalising. Once the observer had recorded all details and was certain that no other species were present, the finish time was noted and the walk continued.

From transect counts made in the 2004/5 surveys, monkey density was estimated using a strip transect method (Whitesides et al. 1988; Marshall et al. 2007). Histograms of distance versus number of visual observations were plotted using a range of bar widths. Visual inspection of the histograms was then made to determine a cut-off distance at which the observations made a sharp and sustained decline (red colobus 27 m, black and white colobus 22 m and Sykes monkeys 41 m). Transect width was then calculated as the sum of the cut-off distance and estimated mean group spread of the three monkey species, multiplied by two as observations were made on both sides of the transect (Whitesides et al. 1988). Use of group spread to adjust cut-off distances is contentious, and therefore estimates of group spread were deliberately high to avoid over-estimation of density and population size. Red colobus mean group spread was estimated as 30 m, black and white colobus 20 m and Sykes monkeys 50 m.

Density per km² was then calculated separately for heavily degraded (i.e. no continuous canopy) and less degraded sections of the transects, using transect length (km) × width (km) × mean number of groups per transect walk within the cut-off distance. Density was calculated separately for heavily degraded areas to ensure that the final estimate allows for the proportion of habitat. Counts of group size in the same areas in 2004/5, mostly made independently of transect counts, were then used to calculate a mean group size. This was used to convert the group density figure to individual density for each transect walk in both heavily degraded and less degraded areas. This figure was then extrapolated to the total estimated area of Magombera forest to give an estimate of population. In making this extrapolation it was estimated that 40 % of Magombera forest is heavily degraded. Again this estimate is on the high side, to avoid overestimation. Density and population were not calculated for the 2007 survey because we had no information on group size and spread. Collecting data on these measurements is very time consuming. Instead we use the encounter rate (groups seen per kilometre transect walked) to compare relative abundance between the two sampling periods.

Methods for estimating density of group-living animals such as monkeys are contentious (Marshall et al. 2007). Wherever possible during the 2007 survey, the locations of all individuals in each group seen before reacting to observer presence were recorded, as for the first individual. This was to allow for

later experimentation with methods for density estimation using the centre of individuals seen (Plumptre & Cox 2006; Marshall 2007; Marshall et al. 2007). However, observers new to using the technical equipment found this difficult and so was not deemed a feasible method at the current time.

iii. Duikers

Red duiker (*Cephalophus natalensis harveyi*), suni (*Neotragus moschatus*) and bushbuck (*Tragelaphus scriptus*) are all known to be present in Magombera forest. During primate transect counts, all observations of small antelope were also recorded in the same way as primates. Because of low sample size, we did not calculate density or population of duikers. Therefore as for primates, we use the basic encounter rate as our figure of comparison.

iv. Other Taxa

While conducting all surveys we also recorded signs of other animals whenever encountered. However no systematic surveys were carried out beyond the trees, monkeys and duikers.

Forest Restoration

Plots for investigating forest restoration were placed near to the Ngulumilo transect. This site was chosen over Mtalawanda to avoid the area nearest the villages, and therefore reduce the chance of theft/damage. A total of 29 plots were placed 100 m from the transect on a known compass bearing. Plots were 5 m × 5 m, with trenches 15 cm deep dug at each corner to assist re-locating plots. Small marks of paint were also made on trees around each plot to assist relocation. Eleven of the plots were placed in areas with a dense cover of restricting climbers, which were subsequently cleared using secateurs (hand-held plant pruners) and machetes (pangas). Protective clothing was worn over hands and arms to avoid skin irritation from plant hairs. Eight of the plots were placed in areas with a dense cover of restricting climbers, which were not cleared. As a control, a further ten plots were placed in areas where restricting climbers were not present (or in very low density) to begin with.

Plots were established between July and September 2007. Within each plot, all tree stems 1 cm dbh or greater were identified and measured at 1.3 m from the ground, using the form in Appendix 2v. Fluorescent tape was tied to each stem, each with a unique number written on the tag in permanent ink. Saplings below 1 cm dbh were also identified and counted, but were not measured. Plots were then re-measured in November 2007, with the intention that re-measurement will then continue into the future at three month intervals. Plots will also be visited periodically to ensure that restricting climbers have

not re-grown in plots that were cleared. During the dry season, regeneration was minimal, however during the wet season we expect that two visits will be required to cut-back climbers. Thus we expect that only two or three visits per year will be enough prevent restricting climbers from regenerating.

Results and Discussion

Threats

i. Cutting

The biggest threat to Magombera forest is the cutting of poles (trees 5-15 cm dbh) for tool handles and building. There is no clear species or site bias for pole-cutting, however the rate is alarming, with a visible effect on the understorey (Figure 5). Cutting is occurring both on and away from research transects. There are more live stems available away from transects than close to transects, however a similar proportion of stems is removed each year (Figure 6a). Most cutting occurs at weekends, presumably when villagers expect rangers to be absent from the area. Similarly there were reports from villagers that some people enter the forest at night, or when researchers are not present.



Figure 5. Typical understorey in Magombera forest (a). Note lack of young trees in comparison with (b) showing understorey in an undisturbed area of Matundu forest (Udzungwa Mountains).

If the current rate of pole-cutting continues without increasing (9.4 % of standing stock per year), the forest understorey will be gone within 11 years (Figure 7). In 2007, 4.4 % of villagers in the area were

dependent on Magombera forest for poles (Harrison & Laizer 2007). However resources outside of Magombera forest have now been depleted to critical levels (personal observation; Harrison & Laizer 2007). Given this depletion, the 7.0 % of villagers that were dependent on these resources (Harrison & Laizer 2007) will be forced to use Magombera forest and the rate of removal will increase by 2.6 times. This more likely scenario would mean that **pole-sized stems will be completely removed within four years (Figure 7)**. More importantly, even now, the absence of regenerating stems in most of Magombera means that the regenerating stock is too sparse to replace canopy trees when they die.

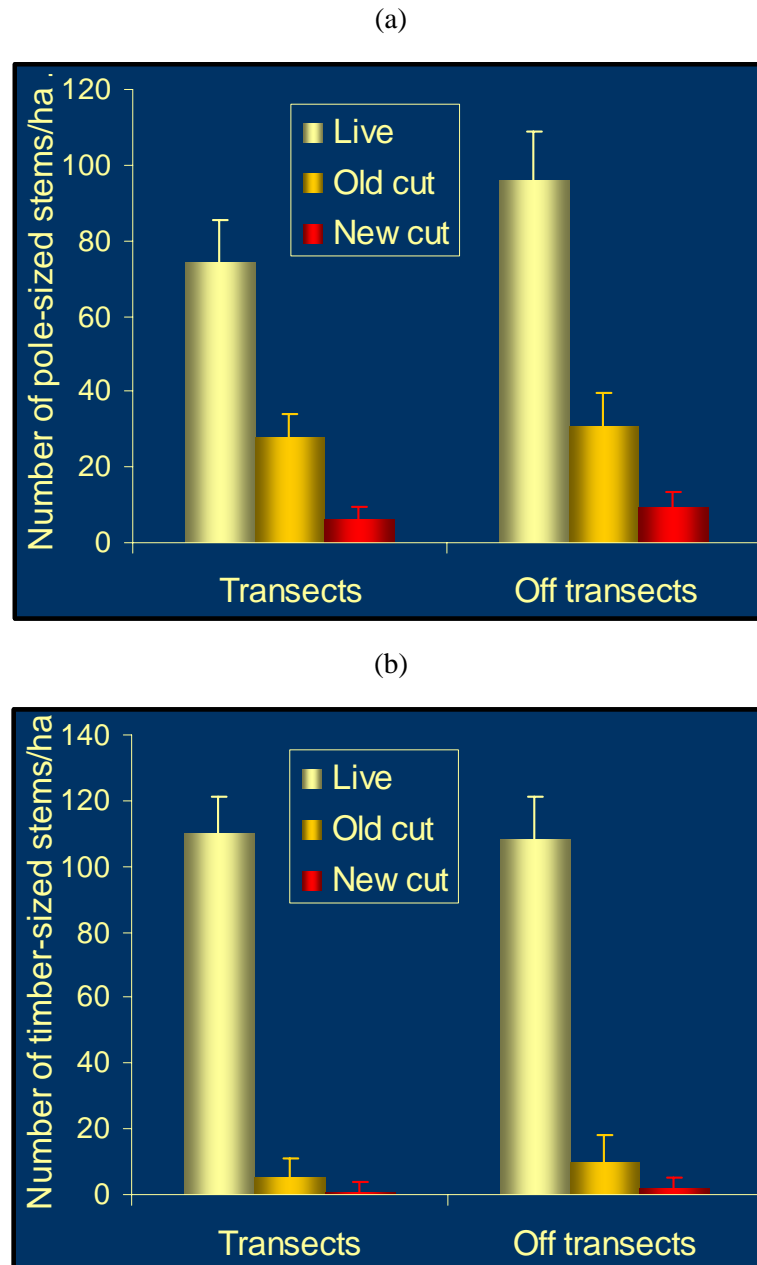


Figure 6. Number of live, old cut (over 1 year) and new cut (within one year) pole-sized (a; 5 to 15 cm diameter) and timber-sized (b; above 15 cm) trees per hectare in eighty 100 m \times 10 m plots. Data are presented separately for plots on and away from transects.

Two of the most common canopy tree species remaining in Magombera are used as timber elsewhere in the region (*Isoberlinia scheffleri* and *Erythrophleum suaveolens*). Therefore despite removal of the timber species of high market value (e.g. *Milicia excelsa* and *Khaya anthotheca*), the forest is not devoid of timber. Despite this, timber-felling was rare both on transects and away from transects (mean 1.1 per hectare per year; Figure 6b), with no particular species bias. However in October 2007, local assistants encountered a large group of people felling several trees about 1 km east of the Mtalawanda trail. These people were reportedly from Msolwa Stesheni village. Immediately upon encountering these people, rangers from the nearby Udzungwa Mountains National Park organised a joint patrol of Magombera forest with rangers from the Selous Game Reserve. Two people were arrested as a result and since that time illegal timber-felling in Magombera forest has ceased.

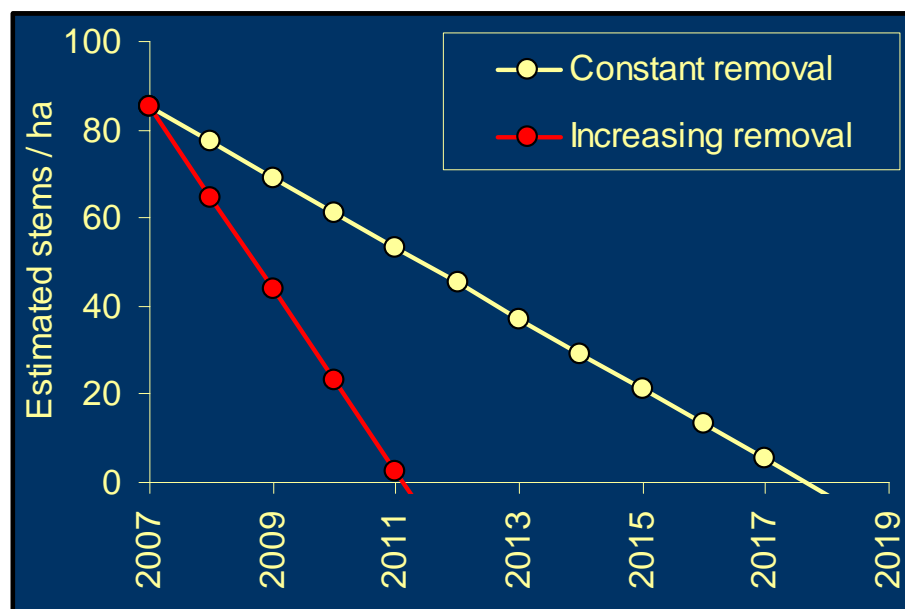


Figure 7. Estimated availability of pole-sized trees in Magombera with time.

Extrapolations are shown using the current level of extraction (constant removal), and the more likely scenario of increasing removal, due to decreasing alternatives (see text).

ii. Fire

Annual bushfires that spread from adjacent fields into the forest are also seriously threatening understorey regeneration. Together with pole-cutting, fire encourages the rapid colonisation of scrambling and herbaceous vegetation that is restricting the growth of regenerating trees. Out of the 80 forest threat assessment plots, 44 had signs of bushfire (55 %). The fires are hot and on rare occasions can even burn canopy trees (Figure 8).



Figure 8. Bushfire in Magombera forest burning a canopy tree, *Erythrophleum suaveolens*.

iii. Firewood Collection

Firewood collection was also widespread across the forest, and was seen in 49 out of 80 forest threat assessment plots (61.25 % of plots). Thirty of these plots were located away from transects, and only 19 on the transects, so the presence of transects has not encouraged increased access for firewood. The effect of firewood collection is to remove detritus (and therefore potential soil nutrients) from the forest floor. This has obvious importance for understorey plant growth, fungi and for soil and understorey detritivores such as millipedes and other invertebrates. It may also impact the small mammal community as seen in the adjacent Udzungwa Mountains (Kiondo unpublished data). These direct impacts on smaller animals have knock-on effects further up the food chain.

iv. Hunting

There was very little evidence of hunting during both the 2004/5 and 2007 surveys. Three snares set for duikers were found in the southern end of the forest during 2004/5. An entire skeleton (besides tusks) of one elephant was found along the Mtalawanda trail, however it is uncertain how this died. A group of fishermen was also once apprehended during the 2004/5 fieldwork. However no snares were seen in any of the forest threat assessment plots during 2007. Fishing continues in the seasonal streams and the nearby Msolwa river and there were occasional reports of poachers killing hippopotamus and elephants. A large animal snare was also found along the Mtalawanda trail during 2007 and colleagues found the remains of a snared buffalo along the same trail in 2005 (Tom Struhsaker personal communication). Overall hunting is not considered a major problem in Magombera forest. However

the low level of hunting may in part be because most ground-living medium-sized mammals have already been over-hunted (see duiker survey results below). Importantly for the rare Udzungwa red colobus, the people of the area do not appear to hunt or eat monkeys. This is reflected in the behaviour of both colobus species, as most do not tend to flee far at the sight of humans, especially in the areas near to Katurukila village.

Other more minor activities also occur in the forest (e.g. cutting of grass for mats and herbal medicine collection), however these are considered of low priority for management planning.

Forest Structure

The forest structure in Magombera is typical of a forest that has undergone understorey disturbance. The impact is best seen when compared to less disturbed forest, so here we present a structural comparison with Isaula, Itula, Bwawani and Machumbo areas of Matundu forest (from similar elevation in lowland Udzungwa; Marshall unpublished data). The overall effect is that the mean size of stems in Magombera is significantly higher than in Matundu (Figure 9). A small increase is also seen from the Magombera survey made in 2004/5 to the Magombera survey in 2007.

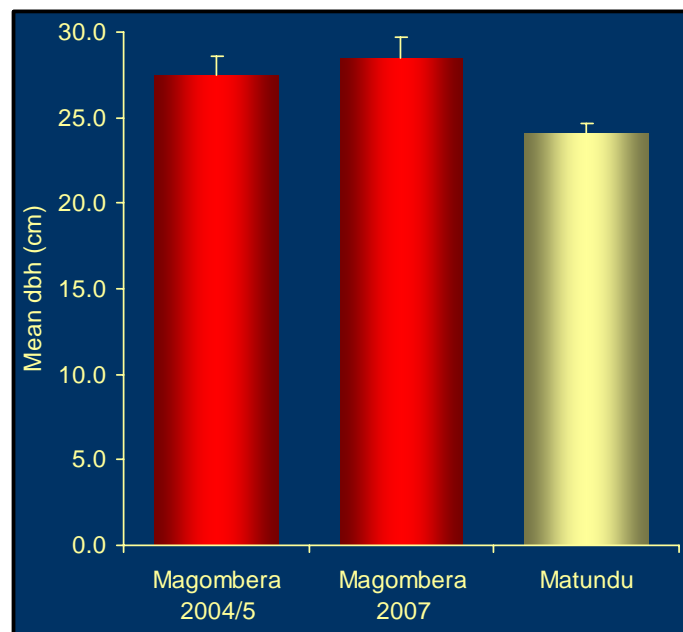


Figure 9. Increased mean dbh of trees 10 cm dbh or greater in Magombera forest (this study) versus Matundu (Marshall unpublished data) and in Magombera 2007 versus 2004/5 forest. The differences shown are due to removal of understorey trees for poles (see Figure 10).

Examining the structural composition further by dividing the stems into 5 cm classes reveals that the observed difference is due to removal of stems in the smallest size class (Figures 5 and 10). In the 2004/5 survey of Magombera there were 1,203 stems, of which 1,112 were remaining in the 2007 re-survey (300.8 and 278.0 per hectare respectively). This compares with 365.1 per hectare in the less disturbed transects of Matundu.

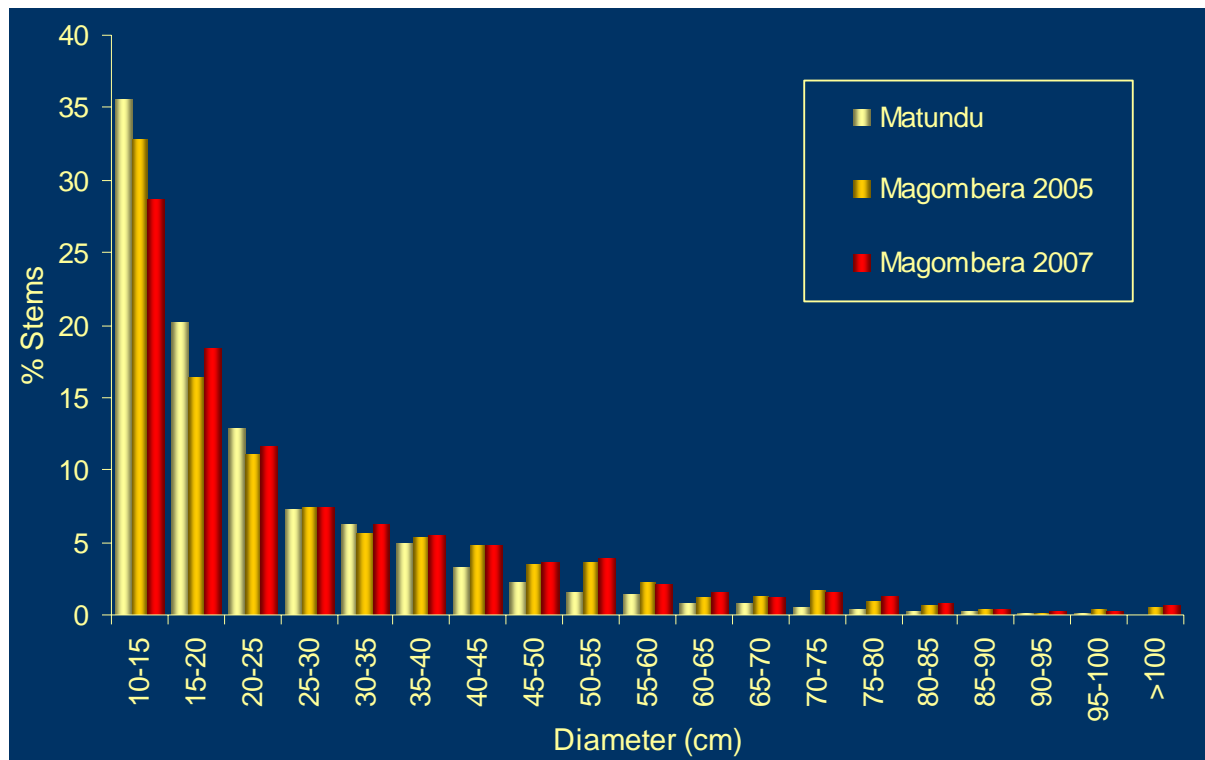


Figure 10. Size-class distribution of trees 10 cm or greater in Magombera forest (this study) versus Matundu forest (Marshall unpublished data). Note the decreasing proportion of stems in the lowest size class from Matundu to Magombera 2004/5 to Magombera 2007. This is due to removal of poles.

Key Species

i. Trees

Eighty-two species of tree greater than or equal to 10 cm dbh were found in the plots, with a further three species seen outside of plots (Appendix 3). The species list is likely to be a near-complete inventory of tree species that reach 10 cm dbh, however there may be a few additional species missed by the plots. Little attempt was made to search for additional species. The relative composition of the most abundant species (Table 1) was very similar to previously reported by Rodgers et al. (1979) and

Vollesen (1980; Table 2). Notably, there are no records of any full-sized *Khaya anthotheca* or *Milicia excelsa* trees remaining in Magombera forest, although there is some sparse regeneration. Vollesen's (1980) list of common species (Table 2) also includes the shrub layer, for which there are no new data.

Table 1. The ten most abundant tree species from plots in Magombera forest. Two size classes are given; “larger trees” (20 cm dbh or greater) and “understorey/midstrata trees” (10 to 19.9 cm dbh). Data presented include frequency per plot, percentage out of the total sampled (1,253 larger trees and 562 understorey/midstrata), and the number of plots in which each species was found.

Larger trees				Understorey/Midstrata			
	Freq	%	Plots		Freq	%	Plots
<i>Isobertia scheffleri</i>	230	18.4	38	<i>Ochna holstii</i>	79	13.3	18
<i>Lettowianthus stellatus</i>	198	15.8	57	<i>Calycosiphonia spathicalyx</i>	74	12.5	26
<i>Erythrophleum suaveolens</i>	162	12.9	62	<i>Isobertia scheffleri</i>	47	7.9	25
<i>Xylopia longipetala</i>	87	6.9	50	<i>Diospyros abyssinica</i>	41	6.9	15
<i>Tapura fischeri</i>	76	6.1	33	<i>Tabernaemontana pachysiphon</i>	37	6.3	18
<i>Ochna holstii</i>	66	5.3	20	<i>Craterispermum schweinfurthii</i>	37	6.3	11
<i>Pseudobersama mossambicensis</i>	37	3.0	8	<i>Diospyros zombensis</i>	22	3.7	14
<i>Sorindeia madagascariensis</i>	32	2.6	16	<i>Tapura fischeri</i>	20	3.4	16
<i>Diospyros mespiliformis</i>	29	2.3	22	<i>Dracaena mannii</i>	18	3.0	16
<i>Vitex doniana</i>	28	2.2	19	<i>Aoranthus penduliflora</i>	17	2.9	11

Despite the general concordance between the species list presented here and those of previous studies, a notable difference is the now high abundance of *Lettowianthus stellatus*. Both Rodgers et al. (1979) and Vollesen (1980) list the species as present but not abundant. This gives an interesting insight into the ecology of this species as it must have regenerated very rapidly to become the second most common tree, in just 25 years. *L. stellatus* has little value for timber or poles and this may have allowed it to flourish.

Rodgers et al. (1979) suggested that *Erythrophleum suaveolens*, *Xylopia parviflora* (now *X. longipetala*), *Isobertia scheffleri* forest was the dominant habitat, with scrubby clearings. They also identified *Syzygium guineense* swamp forest (probably *Syzygium guineense* (Willd.) DC. subsp. *guineense*; Roy Gereau personal communication). The community types from our more recent surveys seem largely similar to these, with a continuum of habitat types largely described by the relative

dominance of *Erythrophleum suaveolens* and *Isoberlinia scheffleri* (Marshall unpublished data; not included here as not relevant to the aims of the report).

Table 2. Dominant vascular plants in Magombera forest in 1978 (Vollesen 1980). The three structural classes are those used by Vollesen. Heights are approximate and names are ordered alphabetically.

Upper storey (35 m)	Second/lower storeys (10 - 25 m)	Shrub layer
<i>Anthocleista grandiflora</i>	<i>Coffea spathicalyx</i> *	<i>Allophylus pervillei</i>
<i>Dialium holtzii</i>	<i>Craterispermum schweinfurthii</i>	<i>Didymosalpinx norae</i>
<i>Erythrophleum suaveolens</i>	<i>Ochna holstii</i>	<i>Diospyros zombensis</i>
<i>Isoberlinia scheffleri</i>	<i>Pachystela brevipes</i> *	<i>Gardenia posoquerioides</i>
<i>Parkia filicoidea</i>	<i>Polyalthia verdcourtii</i>	<i>Leptactina platyphylla</i>
<i>Tetrapleura tetraptera</i>	<i>Pseudobersama mossambicensis</i>	<i>Oxyanthus pyriformis</i>
<i>Treculia africana</i>	<i>Sorindeia madagascariensis</i>	<i>Porterandia penduliflora</i> *
<i>Xylopia parviflora</i> *	<i>Vitex doniana</i>	<i>Psychotria schliebenii</i>
		<i>Rawsonia lucida</i>
		<i>Rinorea ferruginea</i>
		<i>Tabernaemontana usambarensis</i> *
		<i>Tarenna pavettoides</i>

* Names now revised to *Calycosiphonia spathicalyx*, *Xylopia longipetala*, *Synsepalum brevipes*, *Aoranthia penduliflora* and *Tabernaemontana pachysiphon*.

Rodgers et al. (1979) also estimated that the forest contains close to 500 plant species, including five species of conservation importance (“provisional endemics”: *Polyalthia* sp. [later named *P. verdcourtii*], *Ixora* sp. and *Memecylon magnifoliatum*; “Eastern Arc mountain endemics”: *Isolona heinsenii* and *Isoberlinia scheffleri*). While there is no more information on the total number of species, there is certainly now better information on the species of conservation concern, which are far more numerous than first expected. In total 18 “rare” species were found in plots for trees 10 cm dbh or greater (Table 3). These include 10 Eastern Arc and Coastal Forest endemic species and 17 either on the IUCN Red-List or recommended for inclusion on the Red-List (Table 3). Despite the early speculation, there are probably no trees that are endemic to Magombera forest alone. However of note is the presence of *Polyalthia verdcourtii*, which is only known from Magombera and Matundu forests (Gereau personal communication; Figure 11). *Memecylon magnifoliatum* is also probably known only

from Magombera and one other collection in the Selous (personal communication from Doug (R.D.) Stone to Quentin Luke), although we did not record this species.

Table 3. Rare tree species in Magombera forest plots, including the number of stems and plots in which they were found. Two size-classes are given; “larger trees” (20 cm dbh or greater) and “understorey/midstrata trees” (10 to 19.9 cm dbh). IUCN Red-List criteria are from Baillie et al. (2004), Gereau & Luke (2003) and Gereau pers. comm. (EN = Endangered, VU = Vulnerable, PT = Potentially threatened, LC = Least concern). Range information is from Lovett et al. (2006) (EACF = Eastern Arc Mountains and Coastal Forests of Tanzania, Kenya and Mozambique, SSA = Sub-Saharan Africa, T = One location in Tanzania outside EACF, M = Mozambique not CF, Z = Zanzibar).

Species	IUCN	Known range	Larger trees		Under/Mid	
			Stems	Plots	Stems	Plots
<i>Isoberlinia scheffleri</i>	VU	EACF	230	37	47	25
<i>Lettowianthus stellatus</i>	LC *	EACF	198	56	6	6
<i>Pseudobersama mossambicensis</i>	PT	EACF/SSA	37	7	7	5
<i>Aoranthus penduliflora</i>	VU	EACF	13	9	17	11
<i>Dialium holtzii</i>	LC *	EACF/M	9	5	0	0
<i>Polyalthia verdcourtii</i>	EN *	EACF	7	5	8	6
<i>Pterocarpus mildebraedii</i>	EN ⁺	EACF	7	5	3	2
<i>Eugenia capensis</i>	PT ⁺	EACF/M	6	2	5	4
<i>Cordia petersii</i>	EN	EACF	4	4	4	3
<i>Vitex mossambicensis</i>	LC *	EACF/Z	1	1	1	1
<i>Vepris amaniensis</i>	PT	EACF	1	1	12	7
<i>Guibourtia schliebenii</i>	VU	CF/M	1	1	0	0
<i>Burttodavia nyasica</i>	PT	EACF/Z/SE.Africa	1	1	0	0
<i>Haplocoelopsis africana</i>	PT	Tropical Africa	1	1	1	1
<i>Kraussia speciosa</i>	VU	EACF	0	0	2	2
<i>Oxyanthus pyriformis</i> subsp. <i>tanganyikensis</i>	PT	EACF	0	0	2	2
<i>Rothmannia macrosiphon</i>	VU	EACF	0	0	2	2
<i>Khaya anthotheca</i>	VU	Tropical Africa	0	0	1	1

* Proposed status ⁺ Require verification due to uncertain sub-species (Roy Gereau personal communication)

The proportion of trees that are “rare” is remarkable. An astounding 41.2 % of stems 20 cm dbh or greater are either IUCN Red-Listed or endemic to the Eastern Arc Mountains and Coastal Forests (21.9 % of species; 129 stems per hectare; 3.5 species per hectare). Even the two most abundant large trees in Magombera forest fall into this category (*Isoberlinia scheffleri* and *Lettowianthus stellatus*; Tables 1 and 3). A lower proportion of stems 10 to 19.9 cm dbh are “rare” (19.9 % of stems; 23.1 % of species; 29.5 stems per hectare; 3.75 species per hectare). This reduction in rare stems and species among smaller trees, suggests that the high level of pole-cutting is having a serious effect. These figures can again be put in context by comparison with equivalent figures from nearby Matundu forest (Udzungwa Mountains; Marshall unpublished data), where 17.5 % of stems 20 cm dbh or greater are either IUCN Red-Listed or endemic to the Eastern Arc Mountains and Coastal Forests (9.2 % of species; 24.4. stems per hectare; 0.4 species per hectare). For stems 10 to 19.9 cm dbh in Matundu, 12.4 % are within this category (15.0 % of species; 22.4 stems per hectare; 1.4 species per hectare).

The comparison of rare species between the two forests is equally as clear when both size-classes are combined (Magombera: 32.2 % of stems, 23.08 % of species, 94.0 stems per hectare, 4.5 species per hectare; Matundu: 12.8 % of stems, 13.7 % of species, 41.3 stems per hectare, 1.5 species per hectare). From this, Magombera clearly has major importance for the conservation of rare trees. However it’s protected status is significantly lower than Matundu, which mostly lies within the Udzungwa Mountains National Park.

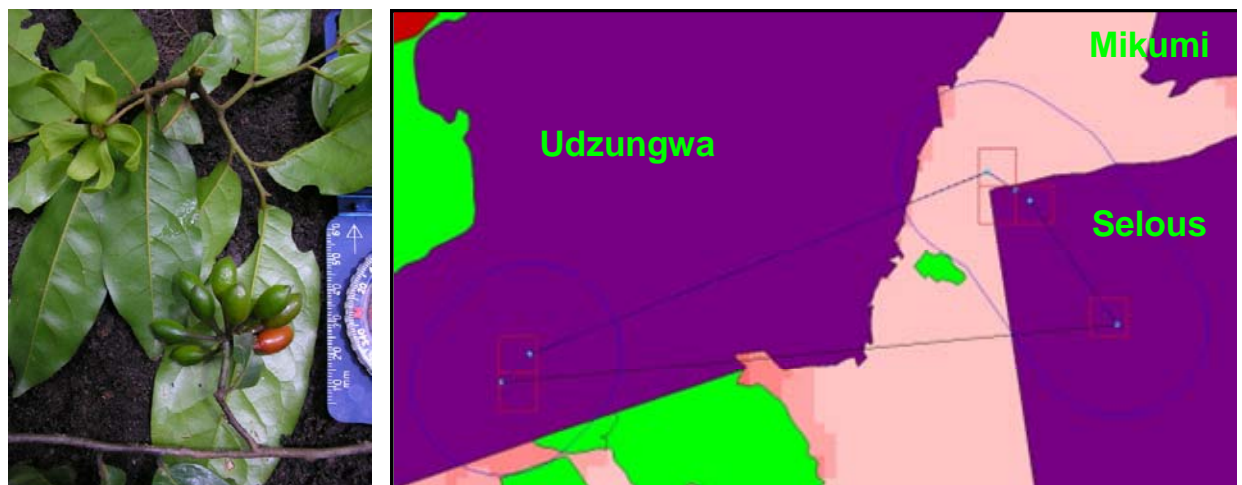


Figure 11. Photograph and IUCN Red-List assessment map showing the complete range of *Polyalthia verdcourtii* (Roy Gereau unpublished data). This is one of the most restricted-range species in Magombera forest.

ii. Monkeys

Our 2004/5 transect counts produced an overall population estimate of $1,022 \pm 359$ Udzungwa red colobus monkeys. This far exceeds the previous estimates of 450 (Rodgers et al. 1979; before clearance of area north of rail) and 472 (Decker 1994; after clearance of the area north of the rail), which were based on far less survey effort. The observed encounter rate is higher than anywhere else (Figure 12; Mtalawanda mean 1.28 ± 0.33 groups per kilometre walked, Ngulumilo 1.06 ± 0.21). The population density is therefore also likely to be the highest anywhere, as predicted by Rodgers et al. (1979). This however assumes that visibility does not differ greatly from studies elsewhere in the Udzungwa Mountains. Direct comparison of density is not currently possible due to methodological differences between studies (e.g. Rovero et al. 2006; Marshall 2007).

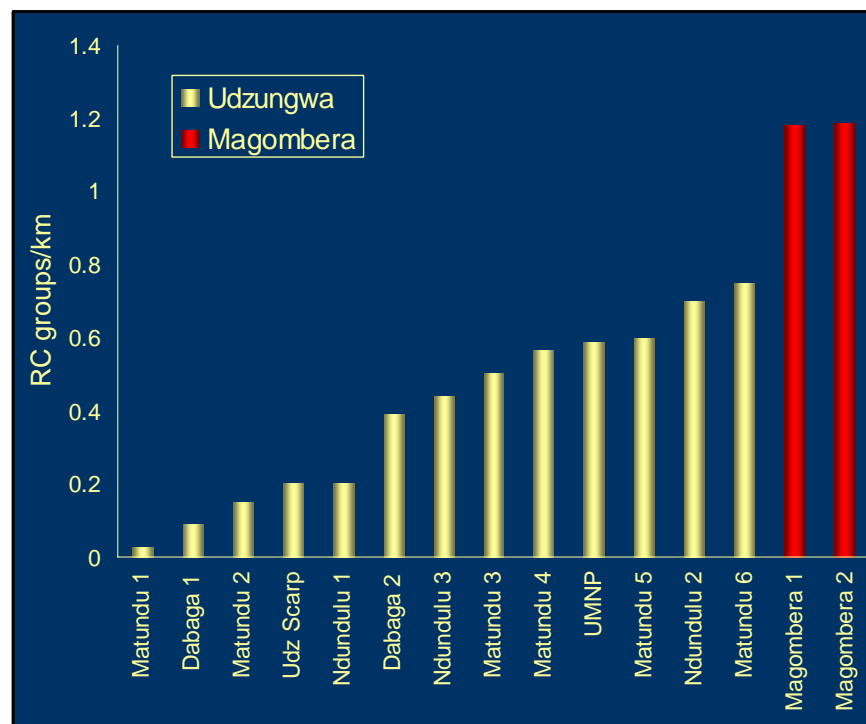


Figure 12. Red colobus groups seen per kilometre transect in the two Magombera transects in 2004/5, versus other localities in the Udzungwa Mountains (Pedersen & Topp-Jørgensen 2000; Marshall et al. 2005; Rovero et al. 2006; Marshall 2007).

The reason for the high encounter rate of the Udzungwa red colobus in Magombera is uncertain. The species is certainly more adapted to lowland semi-deciduous and semi-evergreen forests than the higher elevation evergreen forests, as seen from its reduced abundance at high elevation (Marshall et al. 2005; Marshall 2007). However the abundance in Magombera is uncharacteristically high and may

therefore be a result of compression by rapid forest clearance from the surrounding area. If this is true, the population is likely to be unsustainable and we would expect a future decline. The mean and range of group size of Udzungwa red colobus in Magombera from counts in 2004/5 (22.6 ± 5.5) is towards the lower end of the known range for the species (compare 27.2 ± 15.5 from all published counts to date; Marshall et al. in press). It is also more comparable with degraded forest elsewhere (Kalunga mean 18.6) than with less degraded forest (Udzungwa mean 41.6; Struhsaker et al. 2004). While the habitat is far less degraded than the count made in Kalunga, it may suggest some instability as red colobus group size frequently reflects habitat status (Struhsaker et al. 2004; Marshall et al. 2005; Rovero et al. 2006; Marshall 2007). This requires further study.

From the 2004/5 survey, the two other monkey species resident in Magombera forest are also in high numbers, but within the range of expected relative densities from studies elsewhere (Pedersen & Topp-Jørgensen 2000; Marshall et al. 2005; Rovero et al. 2006). The black and white colobus mean encounter rate was 0.88 ± 0.10 , with a mean group size of 11.7 ± 2.5 , which is also high for the species. From this we estimate a total population of 626 ± 375 . This is the first population estimate for black and white colobus in Magombera forest. Rodgers et al. (1979) estimated a density of 3.4 groups per km². This earlier study did not have reliable data on group size so no population estimate was made.

Sykes monkey density is relatively harder to estimate due to the risk of double-counting and because group-size are difficult to count (Marshall et al. 2007). Therefore we only present a simple encounter rate (mean per kilometre walked 0.84 ± 0.18). As for red colobus, these estimates for black and white colobus and Sykes monkeys were not based on long-term systematic survey, leading Rodgers et al. (1979) to emphasise the high potential for bias. Vervet monkeys were also seen occasionally just inside the forest edge, but observations were too infrequent to analyse (mean per kilometre 0.01 ± 0.02).

In support of the compression hypothesis, repeated surveys in 2007 found a decreased encounter rate of all monkey species (Figure 13). However interpretation of this decline requires some caution. Continued disturbance in Magombera forest may have affected the monkey populations. As well as the physical disturbance reported here, primates in areas of high human activity can be susceptible to human diseases, particularly in small forest fragments (Gillespie et al. 2005; Gillespie & Chapman 2006). It is also possible that the difference has arisen due to having different observers carrying out the 2004/5 and 2007 surveys. Interobserver differences in detection and measurement are a well-known problem for interpreting primate transect counts (Mitani et al. 2001; Rovero et al. 2006). Therefore firm conclusions should not be drawn from this observation and differences will be interpreted with continued monitoring.

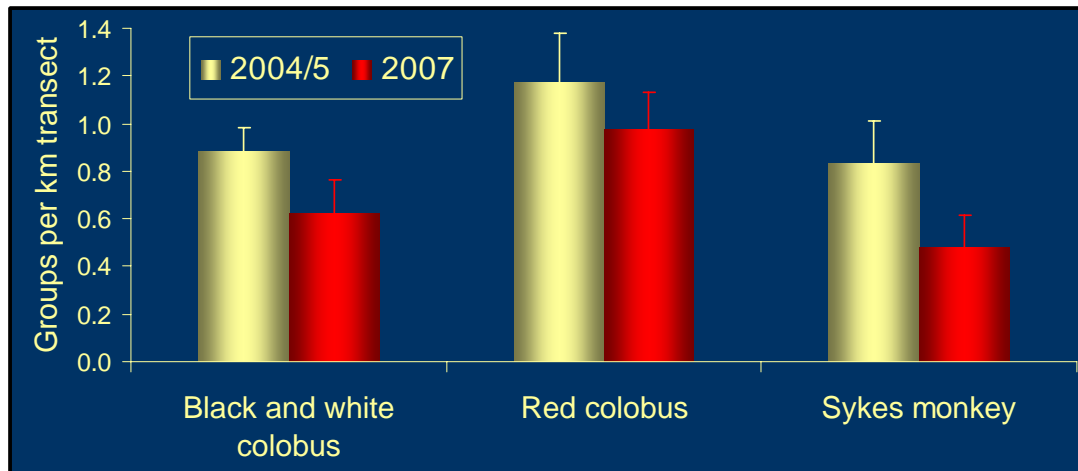


Figure 13. Comparison of primate encounter rate in 2004/5 and 2007.

A further impact of habitat degradation on the red colobus of Magombera forest is seen from statistical analysis of the 2004/5 encounter rate per 200 m section of transect versus vegetation characteristics of the two transects. From 11 habitat variables, the only clearly significant predictor of red colobus encounter rate was the total volume of trees (Table 4). This supports several previous studies that show the Udzungwa red colobus to be highly dependent on intact, closed-canopy forest (Struhsaker et al. 2004; Marshall et al. 2005; Rovero et al. 2006; Marshall 2007). Conversely, black and white colobus showed no clear relationship with habitat (Table 4). Sykes monkeys also did not show clear relationship with habitat, however they were significantly more abundant along the Mtalawanda transect than the Ngulumilo transect (Table 4). This may be due to the close proximity to agriculture where Sykes monkeys can supplement their diets by crop-raiding. Colobus monkeys are however not known to raid crops and neither species showed transect preference.

iii. Duikers

Duikers are very rare in Magombera forest, despite the low density of snares found above. Both suni and red duiker are significantly fewer in Magombera forest than Matundu forest, where hunting has been largely absent for several years (Figure 14). In addition, bushbuck were observed opportunistically on two occasions and a suni was heard calling once. Bushbuck, red duiker and suni were at very low densities in 1979 (Rodgers et al. 1979) although no quantitative data are available for that time. The density has therefore been low for some time. However Rodgers et al. (1979) also noted that game traps were present throughout the forest, suggesting that hunting may simply have reduced in response to declining density caused by over-hunting. Together with this, the lack of connectivity to other forest areas lessens the chance of re-colonisation from elsewhere. Hence population recovery

from past hunting is likely to be slow. Monitoring the recovery is complicated by decreased visibility caused by regeneration of a tangled understorey. As a result, no red duikers were seen during the 2007 transect counts. This may improve if the forest trees can be encouraged to regenerate.

Table 4. Results of GLM analysis of primate group relative abundance versus forest structure, site and composition variables. Strong significant relationships are highlighted in bold type. No significant model was produced for black and white colobus ($p > 0.05$). %D is the percentage deviance i.e. the amount of variation explained and p is the statistical probability.

Species Models	Trend	p
B&W colobus (%D 15.00, p 0.062)		
√ (Climber cover)	positive	0.022
Volume trees ≥ 20 cm	positive	0.090
Red colobus (%D 18.94)		
Volume trees ≥ 20cm	positive	0.023
√ (Climber cover)	positive	0.048
Sykes monkey (%D 17.22)		
Transect	Mtalawanda > Ngulumilo	<0.001

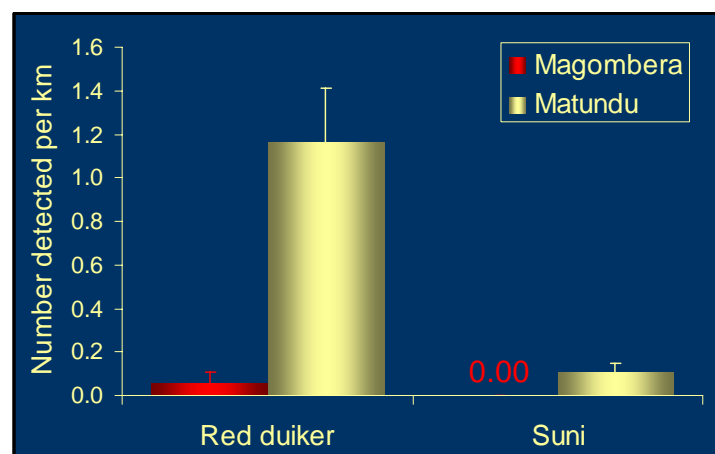


Figure 14. Duikers seen during transect counts in Magombera (high hunting pressure in the 1970s), compared to Matundu forest (low hunting pressure for several years; Marshall unpublished data).

iv. Other Taxa

Kamara (1979) lists elephant, waterbuck, buffalo, bush pig, warthog, aardvark, porcupine, cane rat, elephant shrews and tree squirrels as being present in Magombera forest. These mammals were all observed during the surveys with the exceptions of warthog and waterbuck. Signs of hippopotamus were also seen. Bushpig are now rare in Magombera, yet were “plentiful” in 1979 (Rodgers et al. 1979). This decline is presumably another effect of past hunting.

Elephants are present in Magombera forest mainly between July and December (Figure 15). This increase in elephant activity co-incides with the late dry season. During these months, the water supply in the adjacent Selous Game Reserve is at its lowest and bushfires are common. Magombera forest is therefore important as a dry season refuge for these animals, where water is accessible year-round. During survey work, elephants were observed eating sugar cane in nearby fields, raising concern that they pose a serious human-wildlife conflict. Elephants are certainly dangerous and have been known to injure people in their fields. In wetter months, the forest may act as a buffer between the Selous and the villages, thus reducing these dangerous encounters. Village interviews also revealed that the annual period of elephant activity in the forest does not co-incide with the annual peak in damage to crops (Figure 15). However villagers later suggested that elephants often damage crops from March onwards. In terms of crop-raiding, Kamara (1979) suggests that cane-rats and bushpigs are the major threat. Now that bushpigs are sparse, they are presumably less of a threat. Other threats include birds and vervet monkeys. Sykes monkeys may also pose a threat given their skewed distribution in the forest, being more abundant near to agricultural areas (Table 4). Colobus monkeys do not raid crops.

Additional taxa that remain to be covered in detail include birds, small mammals, amphibians, reptiles and invertebrates. Although bird observations have been made in Magombera forest and there are montane species at unusually low elevation (Jensen & Brøgger-Jensen 1992; Stuart in Decker 1994; Baker personal communication), a list has not been published.

Of interest among the poorly known herpetofauna is the treefrog listed as *Hyperolius* sp. nov. in Rodgers et al. (1979). This has now been named *Hyperolius reesei* and is endemic to the Kilombero valley. Finally among the herpetofauna, an undescribed species of *Kinyongia* chameleon was discovered being eaten by a snake, whilst conducting 2004/5 fieldwork (Figure 16). The species has yet to be named formally, but it will soon be named after Magombera forest (Menegon personal communication). It is only known from Magombera forest and the Udzungwa Mountains.

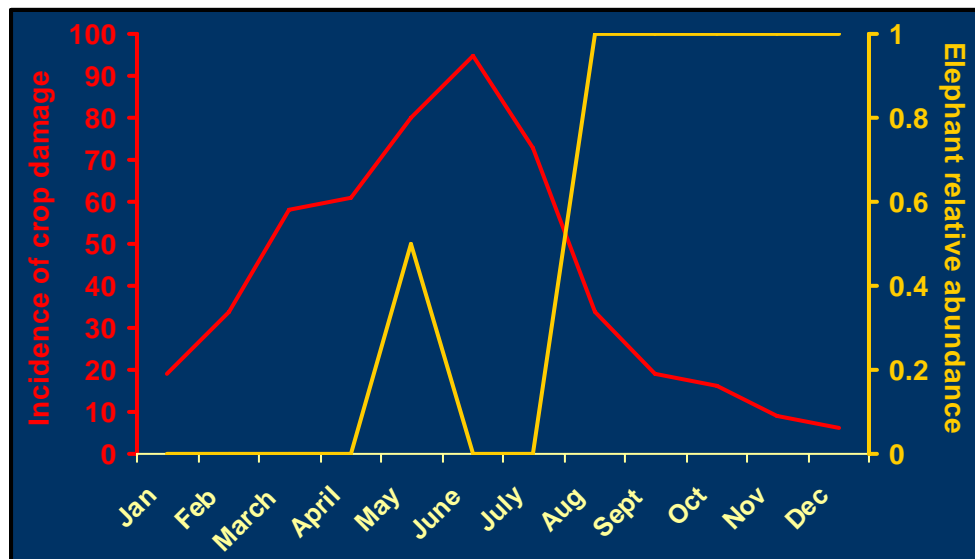


Figure 15. Incidences of crop damage by animals (Harrison & Laizer 2007) in villages and relative abundance of elephants in Magombera forest. Note that these do not coincide, suggesting that elephants are not the major threat to crops.



Figure 16. An undescribed species of chameleon (*Kinyongia* sp. nov.), which will be named after Magombera forest (Menegon personal communication). This photograph is the first ever record of a male of the species.

Forest Restoration

Plots to determine the potential for restorative management by clearance of restricting climbers produced results loosely as expected (Figure 17). After three months the least growth of trees 1 cm dbh

or more, was seen in plots where the extensive cover of climbers was not cleared. In plots where climbers had been removed, growth was slightly greater. Growth was greatest in the control plots where there were no climbers to begin with. These differences are not statistically significant. It should however be noted that the period of growth after plot establishment was dry and therefore the chance of seeing significant results this soon, was slim. Continued monitoring will be required to determine the full effect of removing climbers for encouraging regrowth, although these early indications are encouraging. Also encouraging is that 37.0 % of 261 saplings counted were from IUCN Red-Listed or Eastern Arc and Coastal Forest endemic species. This is higher than the 32.2 % of mature stems in this category, and suggests potential for improving the biodiversity value of the forest still further.

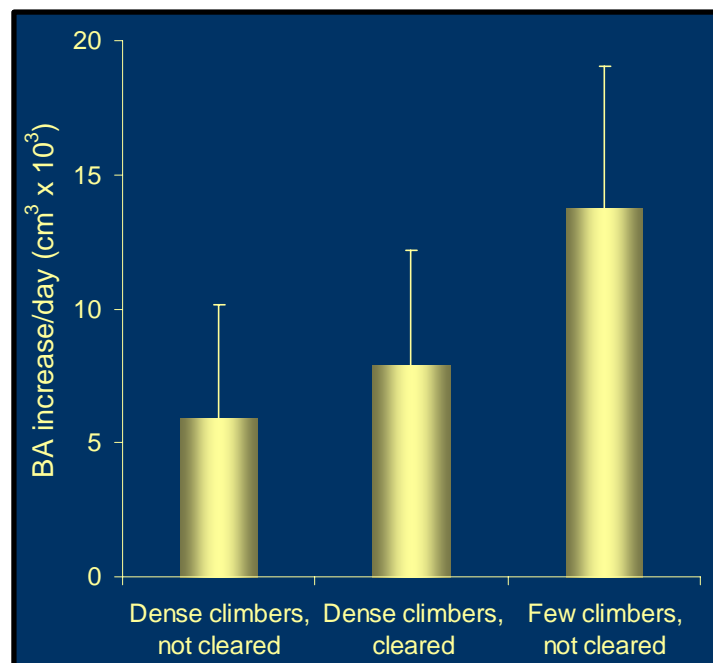


Figure 17. Regeneration of trees 1 cm dbh or greater in 5 m × 5 m plots.

Recommendations

From the results it is clear that Magombera is a forest of huge importance for conservation of biodiversity. It also has value as water catchment for neighbouring villages and has potential for ecotourism such as bird- or monkey-watching. Furthermore, like all forests it has value as a carbon sink for mitigating the effects of climate change. Accordingly, if conserved in a way that maintains the forest structure and biomass, there is potential for Tanzania to generate financial income from

developed nations in the form of carbon credits. However despite the many benefits for biodiversity, local human well-being, global climatic stability and income, the forest has not been protected and continues to be degraded. From our surveys we suggest that the threats to Magombera forest should be prioritised as follows:

- 1) **Pole cutting** (understorey trees predicted to disappear within 4 years)
- 2) **Fire** (annual fires are preventing regeneration and encouraging growth of restricting climbers)
- 3) **Firewood collection** (removal of forest floor woody detritus is likely to affect regeneration)
- 4) **Timber felling** (currently low, however recent threats suggest monitoring is needed)
- 5) **Hunting** (currently low, perhaps because most medium-sized ground mammals already removed)

In its current state, **Magombera forest is a huge asset to Tanzania, famous for its chequered past both locally and internationally**. Given its high profile and biodiversity value it therefore provides an excellent opportunity for Tanzania to show the world its capability to protect and manage an area of high importance for conservation. From the findings above there are several recommendations for management, policy-making, village activities and ecological monitoring. These are outlined below grouped into immediate, short-term and long-term priorities.

Immediate Priorities

There are some priorities that will help to improve the prospects for Magombera forest that are either already in the final stages of development, or could easily be employed immediately with very little financial or human input.

i. Villages

It is imperative that the needs of local villagers are considered in making any management plans. Workshops were held in February 2007 in the four villages adjacent to the forest, at both administrative levels (village council and village general assembly). During workshops the ecological, socio-economic and land-use findings of this project were presented, including awareness-raising on the value of the forest, threats and policy (Appendices 4 and 5; contact WWF-TPO for workshop reports). From these workshops, **signed agreements to annex Magombera forest into the Selous Game Reserve have been made with all four villages**. Other major project recommendations were also discussed.

ii. Policy and Protection

All project documents will now be handed to Kilombero district officials for approval. Following this, it is imperative that the managing authorities with interests placed in Magombera forest are made aware of the project findings. This may best be achieved through a meeting between key members of the current project, WWF-TPO senior staff, Illovo Sugar and senior officials from both the Forestry and Beekeeping and Wildlife Divisions. From this the agreement made in 1980 by all managing authorities, to annex Magombera forest into the Selous Game Reserve should be re-confirmed so that the process can begin. Importantly, such a meeting would need to determine exactly what is required for annexation to be completed, including actions, facilities and personnel.

To ensure that the forest remains protected during the planning process, some activities are required in the vicinity of the forest. Most importantly for ensuring protection, the nature of current patrols needs to be improved. There are three potential improvements that could be made:

- During nearly three years of survey, not a single ranger was encountered in Magombera forest. Villagers and a former ranger of the Selous informed the project that patrols are usually made only along the TAZARA railway or forest edge and do not generally enter the forest. Many illegal activities must therefore be missed. Instead there are several well-established paths through the forest that could be used.
- Given that cutting often occurs at weekends, on public holidays, or at night, it is suggested that patrols are designed so that they are made at less conventional times.
- An emergency response system is also suggested to ensure that rangers are able to react quickly to major activities such as intensive cutting or bushfire inside the forest. A simple system could be to provide the co-ordinator and field assistants carrying out monitoring work in Magombera forest with the phone number of a member of the Selous Game Reserve Msolwa sector, who can authorise an immediate response.

To assist with annexation, boundaries also require measuring, as intended under the current WWF-TPO project.

iii. Monitoring

Continuation of monitoring activities using the methods outlined in this report is vital for assessing and reducing threats for feedback into management. Clear targets for monitoring need to be established including short- and long-term goals. A new project (the “Udzungwa Forest Project” [UFP]; Marshall 2007a) has been proposed to continue from the baseline monitoring initiated by this WWF-TPO

project, involving local villagers and Tanzanian graduates. The proposed project aim is to safeguard the future of Magombera forest by providing a link between managers and villagers including scientific advice on ecology, management and resource planning on village lands. Importantly the proposed project intends to build capacity and education to encourage future self-sufficiency. **It is recommended that the establishment of this project be included in discussions at the proposed management authority and village meetings.** The project has already been endorsed by the Kilombero District Commissioner.

Short-Term Priorities

After initial agreements have been made regarding policy, livelihoods and monitoring, activities to ensure a more permanent system of protection and sustainability will be possible. Most of these could be achievable within one or two years following these initial agreements.

i. Villages

A major initial priority in nearby villages will be to develop a land-use plan, as currently being facilitated by the WWF-TPO project. Most importantly, the future of Magombera forest is dependant on complete cessation of cutting. In other areas of Tanzania, including the Dabaga highlands (Iringa region), all villagers have private woodlots from which they have an indefinite supply of poles for tool handles and building. A similar system could be adopted in the Magombera area for sustaining both pole and firewood needs. The major obstacles to overcome in developing such a plan are a shortage of land and a high rate of immigration (3.4 % per year; Harrison & Laizer 2007). Calculation is therefore required of the land required to sustain village needs, taking into account the amount of poles and firewood required each year, and the growth rate and space occupied by the selected tree species. If possible indigenous species should be used, for example from nurseries established by WWF-TPO along the edge of the Udzungwa Mountains National Park. In order to preserve land, villages also need to curb immigration. Without this it will be near impossible to make sustainable plan as the calculations would need constant updating and land would disappear.

Villages will also have to decide on priorities for livelihoods in relation to increased protection of the forest. These priorities should result from village discussions. For instance, alternative fuel sources may be important to help remove dependence on the forest for firewood. Income generating activities could also be considered that also benefit forest conservation or education. For example growing and selling tree saplings, or ecotourism. Strategies could also be developed for reducing the danger of elephants on farmland, e.g. hanging chilli-soaked rags around plots. Limited technical advice and/or

financial assistance may be available for some small activities through UFP, however it is important that land-use plans are first in place to avoid increased immigration in response to this.

ii. Policy and Protection

The major aim for management should be to complete the Selous annexation process. This should also include boundary demarcation.

Following annexation, a management plan is needed, developed in conjunction with monitoring activities. This should include biological and village livelihood aims (for example using the structure suggested in Figure 18). The Selous managing authorities and UFP should encourage community-based tourism in Magombera forest to ensure that revenue from tourism reaches the local community. Commercial and subsistence hunting in Magombera forest should be forbidden as this would endanger the biodiversity and tourism value.

Depending on observations made during monitoring, active restoration of the forest understorey through widespread clearance of restricting climbers could be considered. Any large-scale clearance should be careful to avoid damaging rare/globally threatened species of climber. The financial cost of this activity is not high (we estimate it should cost around \$20 per hectare of forest per year to clear restricting climbers). By hiring local villagers to carry out this management activity, this would also improve income generation.

iii. Monitoring

The success of some short-term goals can only be determined by setting monitoring targets, including:

- Cessation of pole-cutting;
- Reduction in firewood collection;
- Statistically significant increase in the number of tree stems between 1 and 5 cm dbh.

Long-Term Priorities

i. Villages

The hardest pressure to deal with in the short-term will be curbing the intrinsic population increase. Naturally this may be a sensitive issue with regard to local customs and principles.

ii. Policy and Protection

A current problem for Selous Game Reserve rangers accessing Magombera forest, is that the Msolwa ranger post is not conveniently located for accessing Magombera forest. The road route is around 35 km, as vehicles must pass north along the Msolwa river all the way back to the main Mikumi-Ifakara road (Figure 1). Establishing a ranger post near to Magombera forest would improve logistics and would also allow potential for improving relations with the villages including help with wildlife-related problems such as scaring away elephants.

iii. Monitoring

Some more long-term monitoring goals could include:

- Re-establishment of large tree species previously lost through logging (especially *Milicia excelsa* and *Khaya anthotheca*)
- Stabilised density of the Udzungwa red colobus
- Recovery of duikers and understorey trees to densities comparable with lowland Udzungwa
- Cessation of firewood collection

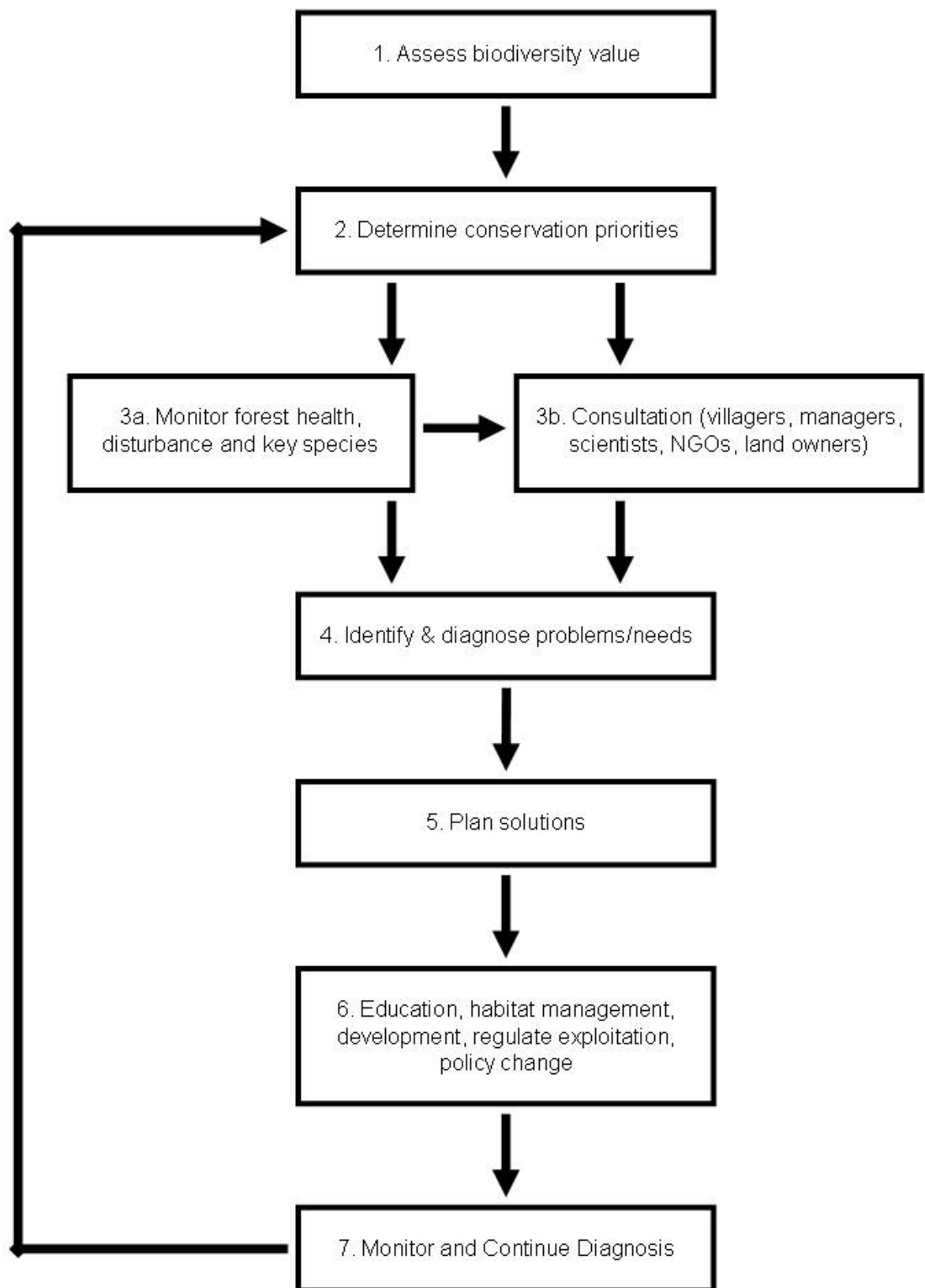


Figure 18. Proposed steps for integration of monitoring, education and conservation management in Magomberera forest (from Marshall 2007a; adapted from Sutherland 2000).

References

- Achard, F., Eva, H.D., Stibig, H.-J., Mayaux, P., Gallego, J., Richards, T., Malingreau, J.-P. (2002) Determination of deforestation rates of the world's humid tropical forests. *Science* 297, 999-1002.
- Asner, G.P., Knapp, D.E., Broadbent, E.N., Oliveira, P.J.C., Keller, M., Silva, J.N. (2005) Selective logging in the Brazilian Amazon. *Science* 310, 480-482.
- Baillie, J.E.M., Hilton-Taylor, C., Stuart, S.N. (2004) The IUCN Red List of Threatened Species. IUCN, Gland.
- Baldus, R.D. (1992) A Confidential Report to the Director of Wildlife About the Need to Annex the Magombera Forest to the Selous Game Reserve. Selous Conservation Programme.
- Balmford, A., Green, R. E., Jenkins, M. (2003) Measuring the changing state of nature. *Trends in Ecology and Evolution* 18, 326–330.
- Chapman, C.A., Peres, C.A. (2001) Primate conservation in the new millennium: the role of scientists. *Evolutionary Anthropology* 10, 16-33.
- Collins, M. (1990) *The Last Rain Forests*. Mitchell Beazley Publishers, London.
- Decker, B.S. (1994) Endangered primates in the Selous Game Reserve. *Oryx* 28, 183-190.
- Decker, B.S. (1996). Notes on the behavioural ecology of the Iringa red colobus *Procolobus badius gordonorum*. *African Primates* 2(1): 15-18.
- Dinesen, L., Lehmberg, T., Rahner, M., Fjeldså, J. (2001) Conservation priorities for the forests of the Udzungwa Mountains, Tanzania, based on primates, duikers and birds. *Biological Conservation* 99, 223-236.
- Duncan, R.S., Chapman, C.A. (2003) Tree–shrub interactions during early secondary forest succession in Uganda. *Restoration Ecology* 11, 198-207.
- Gereau, R., Luke, Q. (2003) List of Potentially Threatened Plants in the EACF Hotspot. Unpublished Report for the Critical Ecosystems Partnership Fund.

Gillespie, T.R., Chapman, C.A. (2006) Prediction of parasite infection dynamics in primate metapopulations based on attributes of forest fragmentation. *Conservation Biology* 20, 441-448.

Gillespie, T.R., Chapman, C.A., Griener, E.C. (2005) Effects of logging on gastrointestinal parasite infections and infection risk in African primates. *Journal of Applied Ecology* 42, 699-707

Gondard, H., Sandrine, J., Aronson, J., Lavorel, S. (2003) Plant functional types: a promising tool for management and restoration of degraded lands. *Applied Vegetation Science* 6, 223-234.

Harrison, P., Laizer, J. (2007) Socio-Economic Baseline Assessment of Villages Adjacent to Magombera Forest. Unpublished report for WWF Tanzania Programme Office.

Hoffman, H.R. (1995) Land Use Conflicts and Habitat Conservation: Magombera Forest Tanzania. Selous Conservation Programme Discussion Paper 20, Wildlife Division Tanzania and Deutsche Gesellschaft Fuer Technische Zusammenarbeit GTZ, Dar es Salaam.

Holmes, J. (1995) Natural Forest Handbook for Tanzania Volume II: Forest Policy, Planning and Utilisation. Sokoine University of Agriculture, Faculty of Forestry, Morogoro, Tanzania.

Jensen, F.P., Brøgger-Jensen, S. (1992) The forest avifauna of the Udzungwa Mountains, Tanzania. *Scopus* 15, 65-83.

Kamara, B.A. (1979) Report of a Survey of Red Colobus Monkeys in Magombera forest. Unpublished Report to Game Division

Kingdon, J. (1997). The Kingdon Field Guide to African Mammals. Academic Press, London, UK.

Landres, P.B., Verner, J., Thomas, J.W. (1988) Ecological use of vertebrate indicator species: a critique. *Conservation Biology* 2, 316-328.

Lockwood, M., Worboys, G.L., Kothari, A. (2006) Managing Protected Areas: A Global Guide. Earthscan, London.

Lovett, J.C., Ruffo, C.K., Gereau, R.K., Taplin, R.D. (2006) Field Guide to the Moist Forest Trees of Tanzania. Centre for Ecology, Law and Policy, York.

Marshall, A.R. (2005) Magombera Forest: Conservation Status and Management Recommendations. In: K. Doody et al. (eds.) Report on the Udzungwa Mountains Workshop. 15th to 17th December 2004. WWF Tanzania Programme Office.

Marshall, A.R. (2007) Disturbance in the Udzungwas: Responses of Monkeys and Trees to Forest Degradation. Ph.D. Thesis, University of York, UK.

Marshall, A.R. (2007a) Udzungwa Forest Project: Project Document. Unpublished report for Flamingo Land Ltd., UK.

Marshall, A.R., Lovett, J.C., White, P.C.L. (2007) Selection of line-transect methods for estimating the density of group-living animals: lessons from the primates. *American Journal of Primatology* 70.

Marshall, A.R., Rovero, F., Struhsaker, T.T., Jørgensbye, H., Lovett, J.C., White, P.C.L. (in preparation) The species-area relationship in a threatened monkey community: controlling for externalities. *American Journal of Primatology*.

Marshall, A.R., Topp-Jørgensen, J.E., Brink, H., Fanning, E. (2005) Monkey abundance and social structure in two high elevation forest reserves in the Udzungwa Mountains of Tanzania. *International Journal of Primatology* 26(1), 127-145.

Marshall, A.R., Rovero, F., Struhsaker, T.T. (in press) *Piliocolobus (Procolobus) gordonorum*. In: N. Rowe (ed.) *All the World's Primates*. Pogonias Press, Charlestown, Rhode Island, USA, expected 2008.

Mayaux, P., Holmgren, P., Achard, F., Eva, H., Stibig, H.-J., Branthomme, A. (2005) Tropical forest cover change in the 1990s and options for future monitoring. *Philosophical Transactions of the Royal Society of London Series B: Biological Sciences* 360, 373-384.

Mitani, J.C., Struhsaker, T.T., Lwanga, J.S. (2000) Primate community dynamics in old growth forest over 23.5 years at Ngogo, Kibale National Park, Uganda: implications for conservation and census methods. *International Journal of Primatology* 21, 269-286.

Pedersen, U. B., Topp-Jørgensen, J. E. (2000). The Impact of Hunting on Three Primate Species in Udzungwa Mountains, Tanzania. Unpublished M.Sc. thesis, University of Copenhagen, Denmark.

- Plumptre, A.J., Cox, D. (2006) Counting primates for conservation: primate surveys in Uganda. *Primates* 47, 65-73.
- Rees, A.F. (1964) A checklist of mammals and amphibians of Ulanga District. *Tanganyika Notes and Records* 61, 145-148.
- Rodgers, W.A., Homewood, K.M. (1979) Resolutions. *Proceedings of the Fourth East African Wildlife Symposium, African Journal of Ecology*.
- Rodgers, W.A., Homewood, K.M., Hall, J.B. (1979) An Ecological Survey of Magombera Forest Reserve. Unpublished Report, University of Dar es Salaam, Tanzania.
- Rodgers, W.A., Homewood, K.M. (1982) Biological values and conservation prospects for the forests and primate populations of the Udzungwa Mountains, Tanzania. *Biological Conservation* 24, 285-304.
- Rovero, F., Struhsaker, T.T., Marshall, A.R., Rynne, T.A., Pedersen, U.B., Butynski, T.M., Ehardt, C.L., Mtui, A.S. (2006) Abundance of diurnal primates in Mwanihana forest, Udzungwa Mountains, Tanzania: a multi-observer comparison of line-transect data. *International Journal of Primatology* 27(4), 675-698.
- Skorupa, J.P. (1986) Responses of rainforest primates to selective logging in Kibale Forest, Uganda. In: K. Benirschke (ed.) *Primates: The Road to Self-Sustaining Populations*. Springer-Verlag, New York, 57-70.
- Skorupa, J.P. (1988) The Effects of Selective Timber Harvesting on Rain-Forest Primates in Kibale Forest, Uganda. Ph.D. Thesis, University of California, Davis, USA.
- Struhsaker, T.T., Leland, (1980) Observations on two rare and endangered populations of red colobus monkeys in East Africa: *Colobus badius gordonorum* and *Colobus badius kirkii*. *African Journal of Ecology* 18, 191-216.
- Struhsaker, T.T., Marshall, A.R., Detwiler, K., Siex, K., Ehardt, C.L., Lisbjerg, D.D., Butynski, T.M. (2004) Demographic variation among the Udzungwa red colobus (*Procolobus gordonorum*) in relation to gross ecological and sociological parameters. *International Journal of Primatology* 25(3), 615-658.
- Struhsaker, T.T., Struhsaker, P.J., Siex, K.S. (2005) Conserving Africa's rain forests: problems in protected areas and possible solutions. *Biological Conservation* 123, 45-54.

Sutherland, W.J., Hill, D.A. (1995) *Managing Habitats for Conservation*. Cambridge University Press, Cambridge.

Sutherland, W.J. (2000) *The Conservation Handbook: Research, Management and Policy*. Blackwell Science Ltd, Oxford, UK.

Vieira, D.L.M., Scariot, A. (2006) Principles of natural regeneration of tropical dry forests for restoration. *Restoration Ecology* 14, 11-20.

Vollesen, K. (1980) *Annotated Check-list of the Vascular Plants of the Selous Game Reserve*. Opera Botanica 59, The Lund Botanical Society, Stockholm.

Whitesides, G.H., Oates, J.F., Green, M.S., Kluberanz, R.P. (1988) Estimating primate densities from transects in a West African rain forest: a comparison of techniques. *Journal of Animal Ecology* 57, 345-367.

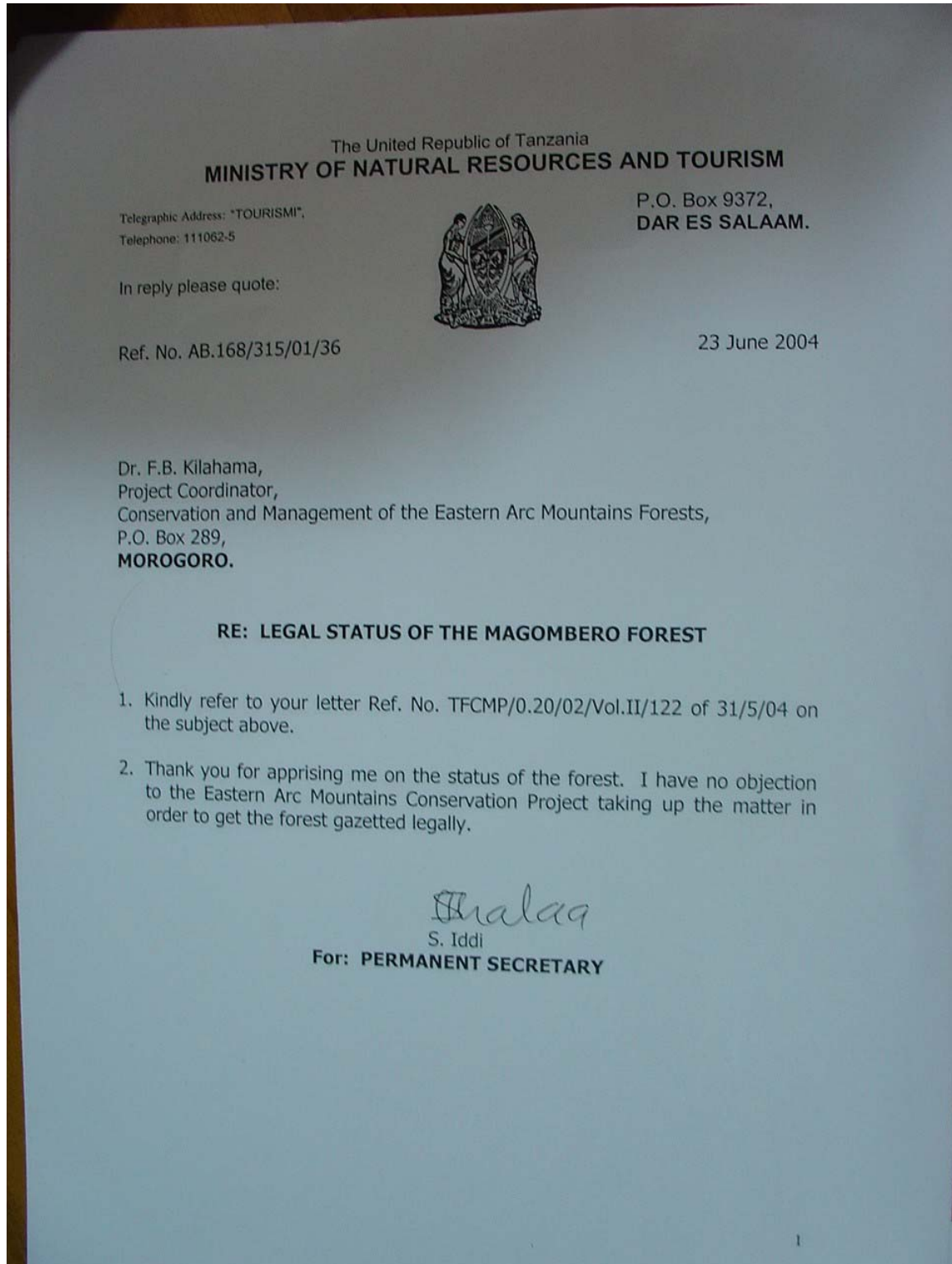
Whitmore, T.C., Sayer, J.A. (1992) *Tropical Deforestation and Species Extinction*. Chapman and Hall, London.

Whitmore, T.C. (1998) *An Introduction to Tropical Rain Forests: Second Edition*. Oxford University Press, Oxford.

World Resources Institute (1992) *World Resources 1992-1993*. Oxford University Press, New York and Oxford.

Appendices

Appendix 1. Ministry letter of support for the increased conservation of Magombera forest.



Appendix 2. Datasheets

i. Threats

Magombera Forest Use Monitoring 100m × 10m plots - Date: _____ Day: _____ Observers: _____

Location & GPS names	Cut stumps				Tisi	Cutting sounds	Kuni	Mitego	Time since fire	Animal & human signs (list species including human tracks/paths)	Notes
	Poles 1yr	Poles >1yr	Timber 1yr	Timber >1yr							
	Cut: Uncut:		Cut: Uncut:								Cut stems <5: Uncut stems <5:
	Cut: Uncut:		Cut: Uncut:								Cut stems <5: Uncut stems <5:
	Cut: Uncut:		Cut: Uncut:								Cut stems <5: Uncut stems <5:
	Cut: Uncut:		Cut: Uncut:								Cut stems <5: Uncut stems <5:
	Cut: Uncut:		Cut: Uncut:								Cut stems <5: Uncut stems <5:
	Cut: Uncut:		Cut: Uncut:								Cut stems <5: Uncut stems <5:
	Cut: Uncut:		Cut: Uncut:								Cut stems <5: Uncut stems <5:
	Cut: Uncut:		Cut: Uncut:								Cut stems <5: Uncut stems <5:
	Cut: Uncut:		Cut: Uncut:								Cut stems <5: Uncut stems <5:
	Cut: Uncut:		Cut: Uncut:								Cut stems <5: Uncut stems <5:

ii. Forest Structure

Transect Vegetation Survey – Stem Data

Forest _____ Transect _____

[illegible]

iii. Forest Structure Re-measurement

Magombera Tree Monitoring - 4km x 5m (stems 10cm dbh) or 10m (20cm dbh) - Transect: MTALAWANDA Date:_____ Observers:_____

Status codes: H=healthy, L=>50% liana cover, B=broken, P=bent, C=cut stem >10cm diameter, X=cut branch <10cm diameter, T=tool handle removed from fluted stem, F=strangling fig/liana on main stem, A=old machete cut, A!=machete cut within the last year, D=dying, DEAD=naturally dead, REMOVED=completely cut down, ?=could not find

[illegible]

iv. Key Species (Mammals)

Forest: _____	Transect: _____	Date: _____	Day: _____	Observers: _____	Start time: _____	Finish time: _____	Length: _____
Cutting (tally): _____		People (tally): _____		Date of last visit: _____		Other animals seen: _____	
Notes: _____							Sheet number: ____ / ____

Observer location	Start time	Finish time	Species	<u>FIRST INDIVIDUAL</u> Distance: Slope:	<u>ALL OTHER INDIVIDUALS</u> 1) perp: sl: side: tally: 2) perp: sl: side: tally: 3) perp: sl: side: tally: 4) perp: sl: side: tally: 5) perp: sl: side: tally: 6) perp: sl: side: tally:	Group size / reliability	Associations
Closest loc	Detection 1	Detection 2	Detection 3	Bearing: Perp/side:		Notes (e.g. subgroups / diet)	
Observer location	Start time	Finish time	Species	<u>FIRST INDIVIDUAL</u> Distance: Slope:	<u>ALL OTHER INDIVIDUALS</u> 1) perp: sl: side: tally: 2) perp: sl: side: tally: 3) perp: sl: side: tally: 4) perp: sl: side: tally: 5) perp: sl: side: tally: 6) perp: sl: side: tally:	Group size / reliability	Associations
Closest loc	Detection 1	Detection 2	Detection 3	Bearing: Perp/side:		Notes (e.g. subgroups / diet)	
Observer location	Start time	Finish time	Species	<u>FIRST INDIVIDUAL</u> Distance: Slope:	<u>ALL OTHER INDIVIDUALS</u> 1) perp: sl: side: tally: 2) perp: sl: side: tally: 3) perp: sl: side: tally: 4) perp: sl: side: tally: 5) perp: sl: side: tally: 6) perp: sl: side: tally:	Group size / reliability	Associations
Closest loc	Detection 1	Detection 2	Detection 3	Bearing: Perp/side:		Notes (e.g. subgroups / diet)	
Observer location	Start time	Finish time	Species	<u>FIRST INDIVIDUAL</u> Distance: Slope:	<u>ALL OTHER INDIVIDUALS</u> 1) perp: sl: side: tally: 2) perp: sl: side: tally: 3) perp: sl: side: tally: 4) perp: sl: side: tally: 5) perp: sl: side: tally: 6) perp: sl: side: tally:	Group size / reliability	Associations
Closest loc	Detection 1	Detection 2	Detection 3	Bearing: Perp/side:		Notes (e.g. subgroups / diet)	
Observer location	Start time	Finish time	Species	<u>FIRST INDIVIDUAL</u> Distance: Slope:	<u>ALL OTHER INDIVIDUALS</u> 1) perp: sl: side: tally: 2) perp: sl: side: tally: 3) perp: sl: side: tally: 4) perp: sl: side: tally: 5) perp: sl: side: tally: 6) perp: sl: side: tally:	Group size / reliability	Associations
Closest loc	Detection 1	Detection 2	Detection 3	Bearing: Perp/side:		Notes (e.g. subgroups / diet)	

v. Forest Restoration

Transect/Njia _____ Tag number/Namba la bati _____ Observers/Majina ya Watafiti _____
 Date/Tarehe _____ Measurement number/Mara ngapi _____ Plot cleared/Imefwekwa Y/N (futa)
 Notes _____

[illegible]

Appendix 3. List of large trees (10 cm dbh or greater) in Magombera forest plots (x = present in plots; o = present outside of plots; . = not recorded). Note that this may not be a comprehensive list for the whole forest.

Species	Family	Transect	
		Mtal	Ngul
<i>Lannea antiscorbutica</i> (Hiern) Engl.	Anacardiaceae	.	x
<i>Sorindeia madagascariensis</i> Thouars ex DC.	Anacardiaceae	x	x
<i>Lettowianthus stellatus</i> Diels	Annonaceae	x	x
<i>Polyalthia verdcourtii</i> Vollesen	Annonaceae	x	x
<i>Xylopia longipetala</i> De Wild. & T. Durand	Annonaceae	x	x
<i>Funtumia africana</i> (Benth.) Stapf	Apocynaceae	.	o
<i>Rauvolfia mombasiana</i> Stapf	Apocynaceae	x	.
<i>Tabernaemontana elegans</i> Stapf	Apocynaceae	x	x
<i>Tabernaemontana pachysiphon</i> Stapf	Apocynaceae	x	x
<i>Voacanga africana</i> Stapf	Apocynaceae	x	x
<i>Kigelia africana</i> (Lam.) Benth.	Bignoniaceae	x	.
<i>Markhamia lutea</i> (Benth.) K. Schum.	Bignoniaceae	x	x
<i>Bombax rhodognaphalon</i> K. Schum.	Bombacaceae	x	.
<i>Cordia petersi</i> Verdc.	Boraginaceae	x	x
<i>Ehretia cymosa</i> Thonn.	Boraginaceae	x	x
? <i>Cassia</i> sp. 2	Caesalpiniaceae	x	x
<i>Cordyla africana</i> Lour.	Caesalpiniaceae	x	x
<i>Dialium holtzii</i> Harms	Caesalpiniaceae	x	x
<i>Erythrophleum suaveolens</i> (Guill. & Perr.) Brenan	Caesalpiniaceae	x	x
<i>Guibourtia schliebenii</i> (Harms) J. Léonard	Caesalpiniaceae	x	.
<i>Isoberlinia scheffleri</i> (Harms ex Engl.) Greenway	Caesalpiniaceae	x	x
<i>Senna singueana</i> (Delile) Lock	Caesalpiniaceae	x	.
<i>Tetrapleura tetraptera</i> (Schumach. & Thonn.) Taub.	Caesalpiniaceae	x	x
<i>Pteleopsis myrtifolia</i> (M.A. Lawson) Engl. & Diels	Combretaceae	x	x
<i>Terminalia sambesiaca</i> Engl. & Diels	Combretaceae	x	.
<i>Tapura fischeri</i> Engl.	Dichapetalaceae	x	x
<i>Dracaena mannii</i> Baker	Dracaenaceae	x	x
<i>Diospyros abyssinica</i> (Hiern) F. White	Ebenaceae	.	x
<i>Diospyros ferrea</i> (Willd.) Bakh.	Ebenaceae	x	x
<i>Diospyros kabuyana</i> F. White	Ebenaceae	x	x
<i>Diospyros mespiliformis</i> Hochst. ex A. DC.	Ebenaceae	x	x
<i>Diospyros natalensis</i> (Harv.) Brenan	Ebenaceae	x	x
<i>Diospyros squarrosa</i> Klotzsch	Ebenaceae	x	.

<i>Diospyros zombensis</i> (B.L. Burtt) F. White	Ebenaceae	x	x
<i>Antidesma vogelianum</i> Müll. Arg.	Euphorbiaceae	x	x
<i>Bridelia micrantha</i> (Hochst.) Baill.	Euphorbiaceae	x	.
<i>Croton ?sylvaticus</i> Hochst. ex Krauss	Euphorbiaceae	x	.
<i>Drypetes parvifolia</i> (Müll. Arg.) Pax & K. Hoffm.	Euphorbiaceae	x	.
<i>Mallotus oppositifolius</i> (Geiseler) Müll. Arg.	Euphorbiaceae	x	x
<i>Casearia gladiiformis</i> Mast.	Flacourtiaceae	x	x
<i>Flacourtia indica</i> (Burm. f.) Merr.	Flacourtiaceae	x	.
<i>Rawsonia lucida</i> Harv. & Sond.	Flacourtiaceae	x	.
<i>Garcinia livingstonei</i> T. Anderson	Guttiferae (=Clusiaceae)	x	x
<i>Anthocleista grandiflora</i> Gilg	Loganiaceae	x	x
<i>Strychnos mitis</i> S. Moore	Loganiaceae	x	.
<i>Memecylon sousae</i> A. Fern. & R. Fern.	Melastomataceae	.	o
<i>Ekebergia capensis</i> Sparrm.	Meliaceae	.	x
<i>Khaya anthotheca</i> (Welw.) C. DC.	Meliaceae	x	o
<i>Pseudobersama mossambicensis</i> (Sim) Verdc.	Meliaceae	.	x
<i>Turraea robusta</i> Gürke	Meliaceae	.	x
<i>Albizia gummifera</i> (J.F. Gmel.) C.A. Sm.	Mimosaceae	x	.
<i>Parkia filicoidea</i> Welw. ex Oliv.	Mimosaceae	x	.
<i>Antiaris toxicaria</i> Lesch.	Moraceae	x	.
<i>Ficus sycomorus</i> L.	Moraceae	x	.
<i>Milicia excelsa</i> (Welw.) C.C. Berg	Moraceae	x	x
<i>Treculia africana</i> Decne.	Moraceae	x	x
<i>Eugenia capensis</i> (Eckl. & Zeyh.) Sond.	Myrtaceae	x	x
<i>Syzygium cumini</i> (L.) Skeels *	Myrtaceae	x	.
<i>Ochna holstii</i> Engl.	Ochnaceae	x	x
<i>Dalbergia fischeri</i> Taub.	Papilionaceae	x	x
<i>Pterocarpus mildbraedii</i> Harms	Papilionaceae	x	x
<i>Cassipourea gummiflua</i> Tul.	Rhizophoraceae	x	x
<i>Aorantho penduliflora</i> (K. Schum.) Somers	Rubiaceae	x	x
<i>Burttidavya nyasica</i> Hoyle	Rubiaceae	.	x
<i>Calycosiphonia spathicalyx</i> (K. Schum.) Robbr.	Rubiaceae	x	x
<i>Catunaregam pentandra</i> (Gürke) Bridson	Rubiaceae	.	x
<i>Craterispermum schweinfurthii</i> Hiern	Rubiaceae	x	.
<i>Didymosalpinx norae</i> (Swynn.) Keay	Rubiaceae	x	.
<i>Kraussia speciosa</i> Bullock	Rubiaceae	x	.
<i>Leptactina platyphylla</i> (Hiern) Wernham	Rubiaceae	x	x

* Probable misidentification as *S. cumini* is not indigenous (instead probably *Syzygium guineense* (Willd.) DC. subsp. *guineense*; Roy Gereau personal communication)

<i>Oxyanthus pyriformis</i> (Hochst.) Skeels subsp. <i>tanganyikensis</i> Bridson	Rubiaceae	x	.
<i>Rothmannia macrosiphon</i> (Engl.) Bridson	Rubiaceae	.	x
<i>Tarenna pavettoides</i> (Harv.) Sim	Rubiaceae	x	x
<i>Tricalysia pallens</i> Hiern	Rubiaceae	x	x
<i>Vangueria apiculata</i> K. Schum.	Rubiaceae	.	x
<i>Vepris amaniensis</i> (Engl.) Mziray	Rutaceae	x	x
<i>Blighia unijugata</i> Baker	Sapindaceae	x	.
<i>Haplocoelopsis africana</i> F.G. Davies	Sapindaceae	x	.
<i>Synsepalum brevipes</i> (Baker) T.D. Penn.	Sapotaceae	x	x
<i>Harrisonia abyssinica</i> Oliv.	Simaroubaceae	x	.
<i>Cola ?microcarpa/discoglypsemnophylla</i>	Sterculiaceae	.	x
<i>Sterculia appendiculata</i> K. Schum.	Sterculiaceae	.	o
<i>Vitex doniana</i> Sweet	Verbenaceae	x	x
<i>Vitex mossambicensis</i> Gurke	Verbenaceae	x	x
<i>Rinorea arborea</i> (Thouars) Baill.	Violaceae	.	x

Appendix 4. Slides used to present ecological findings to four villages adjacent to Magombera forest.



Msitu wa Magombera: Umuhimu, Titishio na Mapendekezo Kutoka Tafiti za Kiikolojia

ANDREW R. MARSHALL
Chuo Kikuu cha York & Flamingo Land, Uingereza
WWF – Ofisi ya Programu Tanzania



Umuhimu ya Misitu



- Maji
- Mabadiliko ya hali ya hewa
- Rutuba ya udongo
- Mmomonyoko wa udongo
- Maisha pori (wanyama na mimea)
- Maliasili



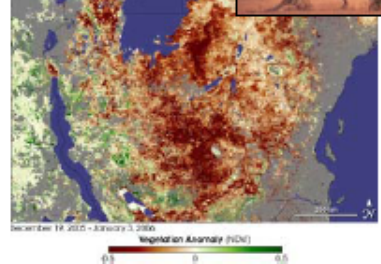

MAJI

Misitu hufanya kama siponji, hushikilia maji kwa ajili ya upatikanaji wake mwaka mzima...

... na pasipo misitu, maji ya mvua hutiririka na kupotea bure na kuongeza hatari ya ukame...

MAJI

Ukame nchini kwa mwaka 2005/6 ulitokea maeneo ya nje ya misitu ya hifadhi:

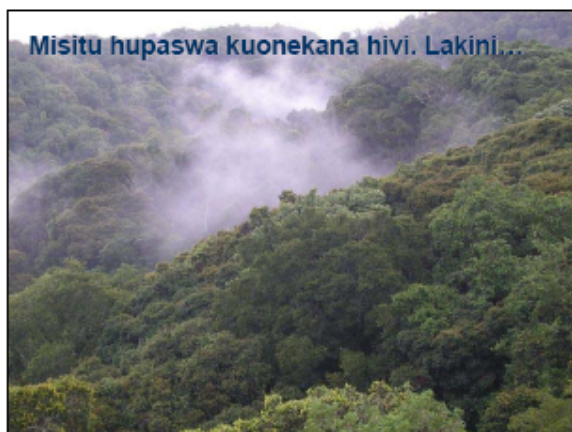

MABADILIKO YA HALI YA HEWA

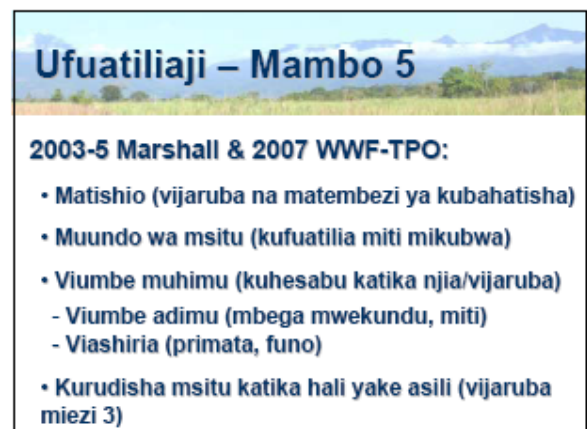
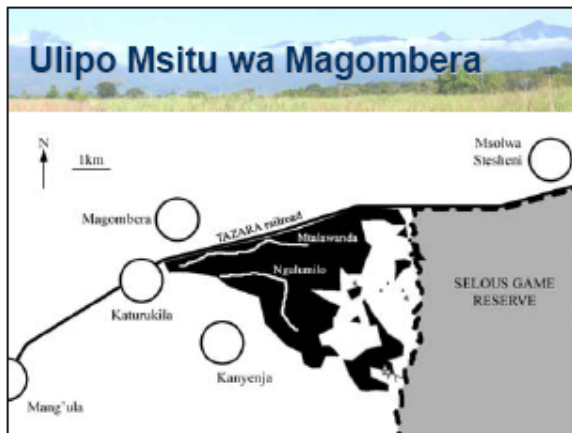
Misitu hufyonza hewa ya ukaa (kabonidaikioksaidi) na husaidia kutunza hewa



RUTUBA YA UDONGO

Misitu hutunza virutubisho vingi na rutuba ya udongo, na hufanya hali nzuri kwa ajili ya mazao





Umuhimu wa Magombera



Polyalthia verdicourii
Mkovati

- Mchanganyiko wa pekee wa sipishi za viumbe hai



Ramani ya IUCN ya Mkwati (R. Gersau)

Umuhimu wa Magombera



Polyalthia verdicourii
Mkovati

- Aina 3 za miti ipatikanayo maeneo haya tu



Ramani ya IUCN ya Mkwati (R. Gersau)

Umuhimu wa Magombera



Isobertinia schimperi
Ngumugume



Lemnolanthus stellatus
Mawehile

- 41% ya spishi za viumbe ni adimu (mara 2 ya Udzungwa)!!
- Makimbilio ya Wanyama wakubwa
- Msongamano mkubwa wa Mbega wekundu wa Udzungwa
- Aina mpya ya Kinyonga

Umuhimu wa Magombera




41% ya spishi za viumbe ni adimu (mara 2 ya Udzungwa)!!

- Makimbilio ya Wanyama wakubwa
- Msongamano mkubwa wa Mbega wekundu wa Udzungwa
- Aina mpya ya Kinyonga

Umuhimu wa Magombera




Kinyonga
aina mpya



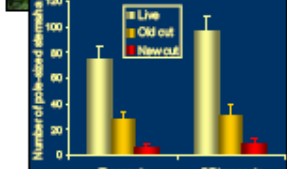
Kinyonga
aina mpya

- 41% ya spishi za viumbe ni adimu (mara 2 ya Udzungwa)!!
- Makimbilio ya Wanyama wakubwa
- Msongamano mkubwa wa Mbega wekundu wa Udzungwa
- Aina mpya ya Kinyonga

Ufuatiliaji – Matishio



Miti midogo ni michache



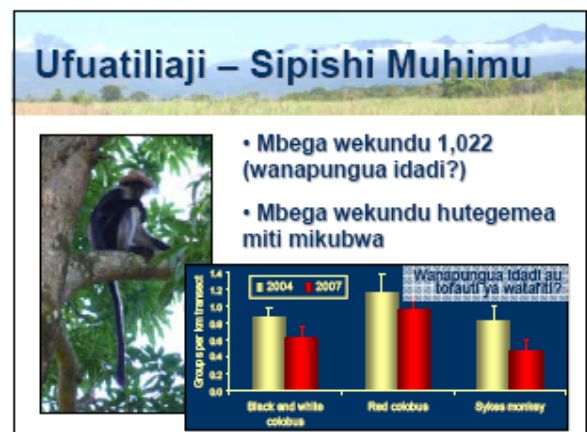
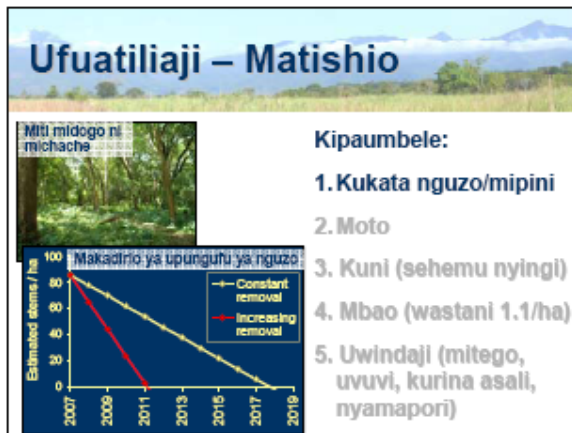
Number of trees in the area

Live, Old out, New out

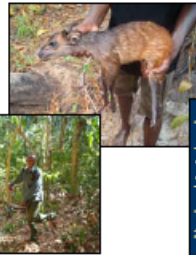
Transsects, Off-transsects

Kipaumbele:

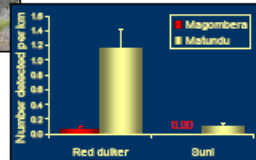
1. Kukata nguzo/mipini
2. Moto
3. Kuni (sehemu nyingi)
4. Mbao (wastani 1.1/ha)
5. Uwindaji (mitigo, uvuvi, kurina asali, nyamapori)



Ufuatiliaji – Sipishi Muhimu



- Idadi suala wadogo yao ndogo kuliko msitu wa Matundu sababu ya uwindaji wa binadamu



Ufuatiliaji – Kurejesha Msitu



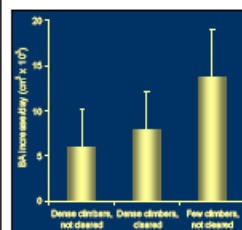
- Viharuba 29
 - 11 kamba zilifyekwa
 - 8 kamba ziliachwa
 - 10 hakuna kamba
- Mashina $\geq 1\text{cm}$ ukk & 1.5m yalipimwa
- Ikapimwa tena baada ya miezi 3

Ufuatiliaji – Kurejesha Msitu



- Viharuba 29
 - 11 kamba zilifyekwa
 - 8 kamba ziliachwa
 - 10 hakuna kamba
- Mashina $\geq 1\text{cm}$ ukk & 1.5m yalipimwa
- Ikapimwa tena baada ya miezi 3

Ufuatiliaji – Kurejesha Msitu



- Viharuba 29
 - 11 kamba zilifyekwa
 - 8 kamba ziliachwa
 - 10 hakuna kamba
- Mashina $\geq 1\text{cm}$ ukk & 1.5m yalipimwa
- Ikapimwa tena baada ya miezi 3

Mapendekezo



- Kuongeza eneo la pori la akiba la Selous
- Elimu kwa jamii
- Kupanda miti vijijini (kuni, nguzo, mipini)
- Kupunguza ongezeko la watu
- Kuendeleza ufuatiliaji...



Mradi Mpya



Mfadhili: Flamingo Land

Mahali: Udzungwa (ikiwemo Magombera)

Lengo: Kuboresha uhifadhi na utafiti wa maeneo muhimu ya maisha pori

Kuanza: 2007

Muda kamili kuanza: 2008

Appendix 5. Photographs from workshops in the four villages adjacent to Magombera forest.



Zakiya Aloyce
(WWF-TPO)



Feddy Eliasaph
(Kilombero District Natural Resources Officer)



Astenius Nduguru
(Selous Msolwa Sector Warden)



Samuel Mtoka
(WWF-TPO and UFP)



Andy Marshall
(University of York and Flamingo Land Ltd.)



Bwana Mdalahela (District Land Office) and
Katurukila village council



Erasmus Kimario (UMNP Community Conservation Officer) and Katurukila village council



Francis Mpota (Bwana Shamba, Magombera village) and Magombera village general assembly



Kanyanja village council members



Msolwa Stesheni village council members



Zakiya Aloyce and Msolwa Stesheni village general assembly



“Team Magombera” in Kanyenja village